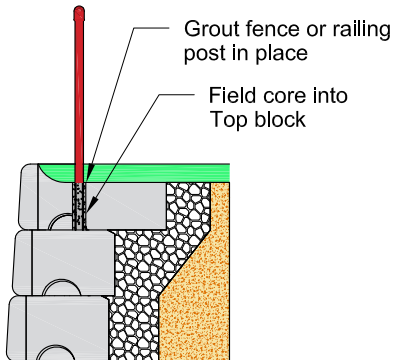
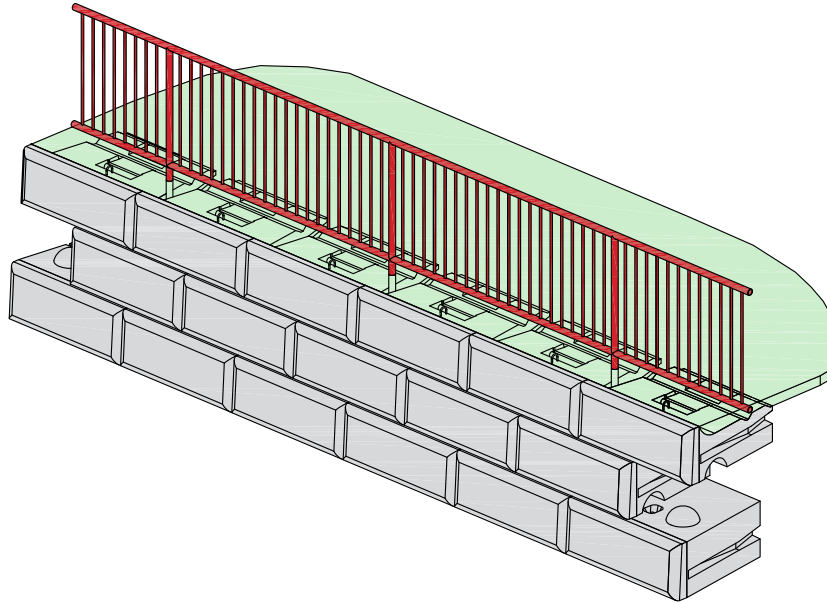
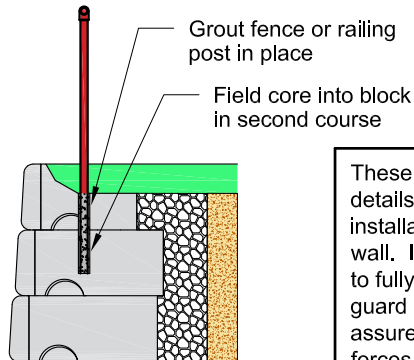


Fence or Pedestrian Guard Connection Options

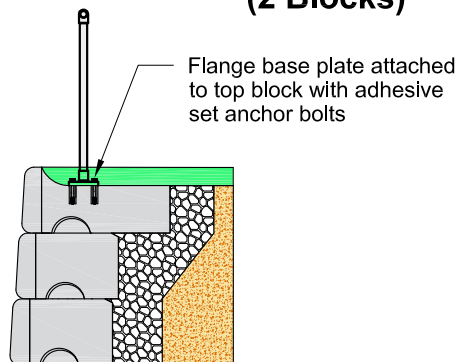


**Grouted Connection
(1 Block)**

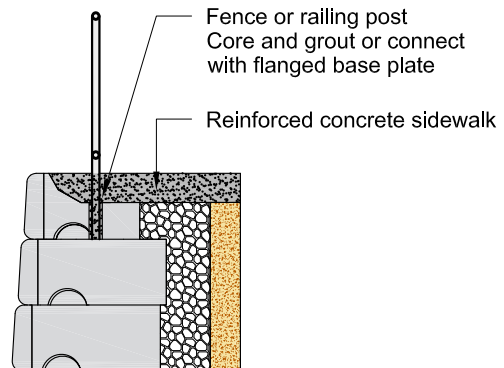


**Grouted Connection
(2 Blocks)**

These generic pedestrian guard and fence details show a few potential options for their installation on the top of a Redi-Rock retaining wall. It is the design engineer's responsibility to fully design and detail the connection of the guard posts to the retaining wall blocks and assure acceptable resistance to the applied forces. Redi-Rock blocks are plain concrete, without steel reinforcement.



Flange Bolted Connection



Moment Slab Connection

This drawing is for reference only. Determination of the suitability and/or manner of use of any details contained in this document is the sole responsibility of the design engineer of record. Final project designs, including all construction details, shall be prepared by a licensed professional engineer using the actual conditions of the proposed site.

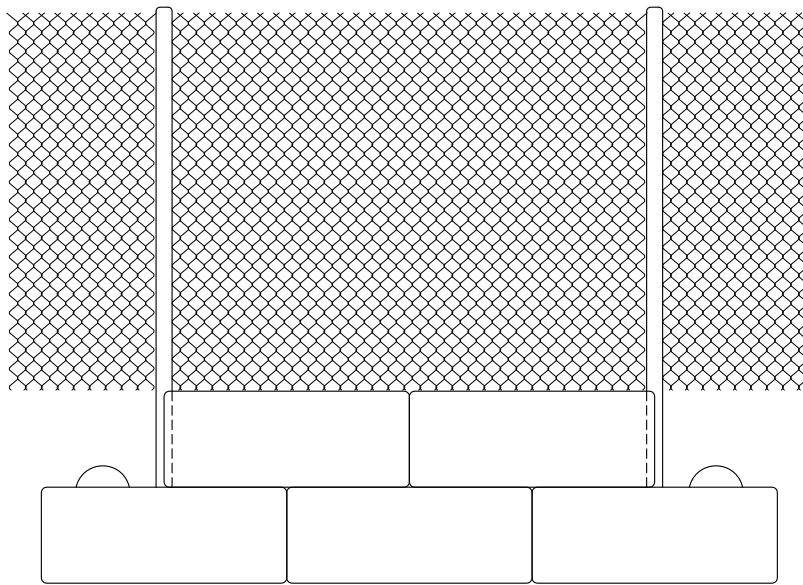
DRAWN BY: JRJ
APPROVED BY: JRJ
DATE: 06-22-2015
SHEET: 1 of 1

TITLE: Fence or Pedestrian Guard
Connection Options

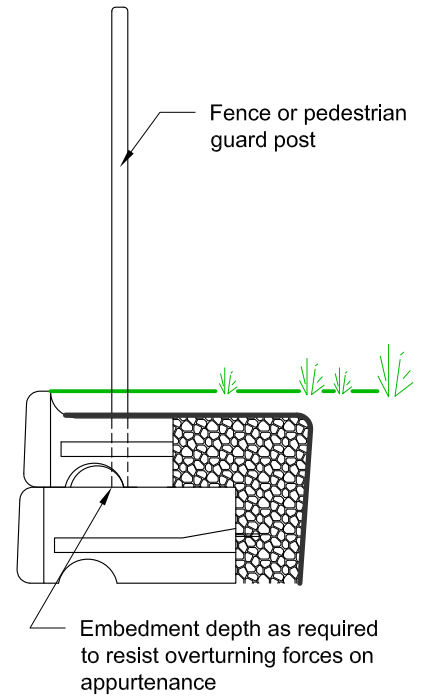
FILE: 5 Fence or Pedestrian Guard Connection Options 062215.dwg

REDI-ROCK®
05481 US 31 SOUTH, CHARLEVOIX, MI 49720
(866) 222-8400 ext 3010 • engineering@redi-rock.com
www.redi-rock.com

Fence or Pedestrian Guard Connection Locations



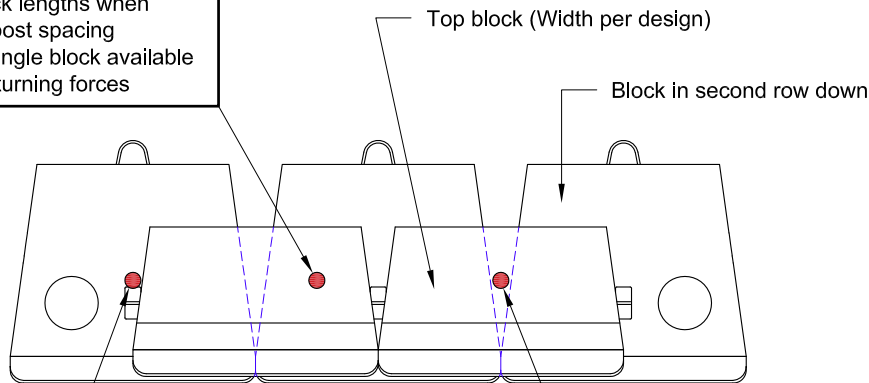
Front View



Side View

Connection Option #1
Anchor into the top block

- Consider block lengths when determining post spacing
- Weight of a single block available to resist overturning forces



Top View

Connection Option #2
Grout posts in v-shaped opening between top blocks

- Spacing in multiples of 46 1/8" (1172 mm)
- Weight of a 2 adjacent blocks available to resist overturning forces

Connection Option #3
Core through top block and grout posts in V-shaped opening between lower blocks

- Spacing in multiples of 46 1/8" (1172 mm)
- Weight of a 2 adjacent blocks on second level down and 3 top row blocks available to resist overturning forces

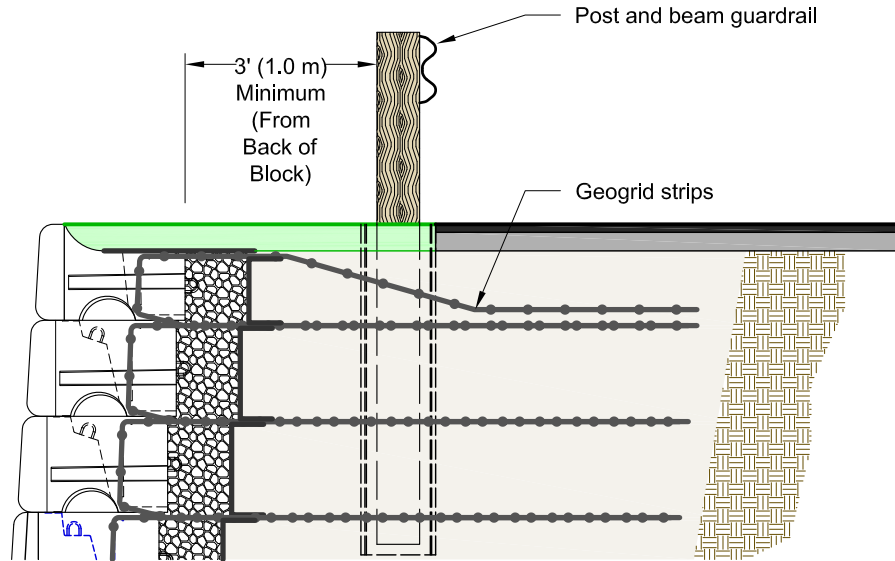
This drawing is for reference only. Determination of the suitability and/or manner of use of any details contained in this document is the sole responsibility of the design engineer of record. Final project designs, including all construction details, shall be prepared by a licensed professional engineer using the actual conditions of the proposed site.

DRAWN BY: JRJ
APPROVED BY: JRJ
DATE: 06-22-2015
SHEET: 1 of 1

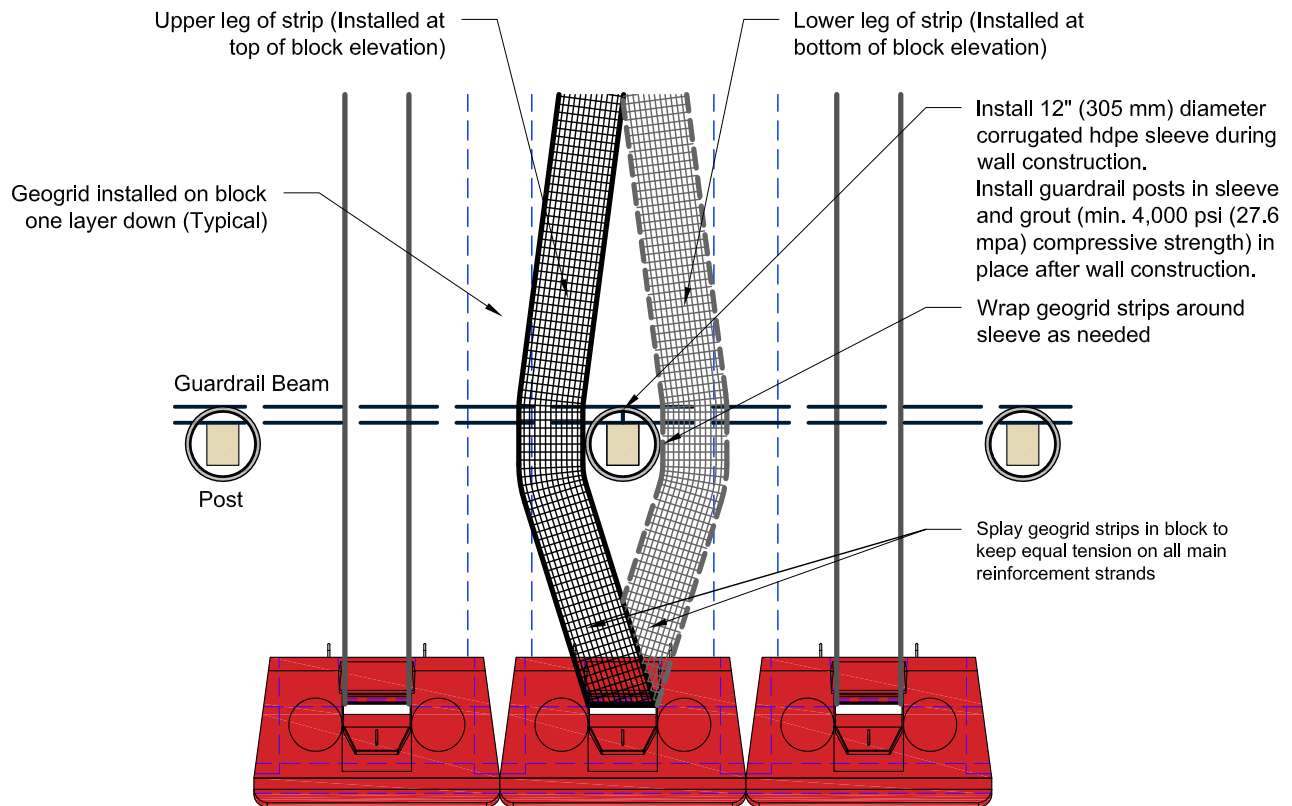
TITLE: Fence or Pedestrian Guard Connection Locations
FILE: 6 Fence or Pedestrian Guard Connection Locations 062215.dwg

REDI-ROCK®
05481 US 31 SOUTH, CHARLEVOIX, MI 49720
(866) 222-8400 ext 3010 • engineering@redi-rock.com
www.redi-rock.com

Post and Beam Guardrail



Section View



Top View

This drawing is for reference only. Determination of the suitability and/or manner of use of any details contained in this document is the sole responsibility of the design engineer of record. Final project designs, including all construction details, shall be prepared by a licensed professional engineer using the actual conditions of the proposed site.

DRAWN BY: JRJ
APPROVED BY: JRJ
DATE: 06-22-2015
SHEET: 1 of 1

TITLE:

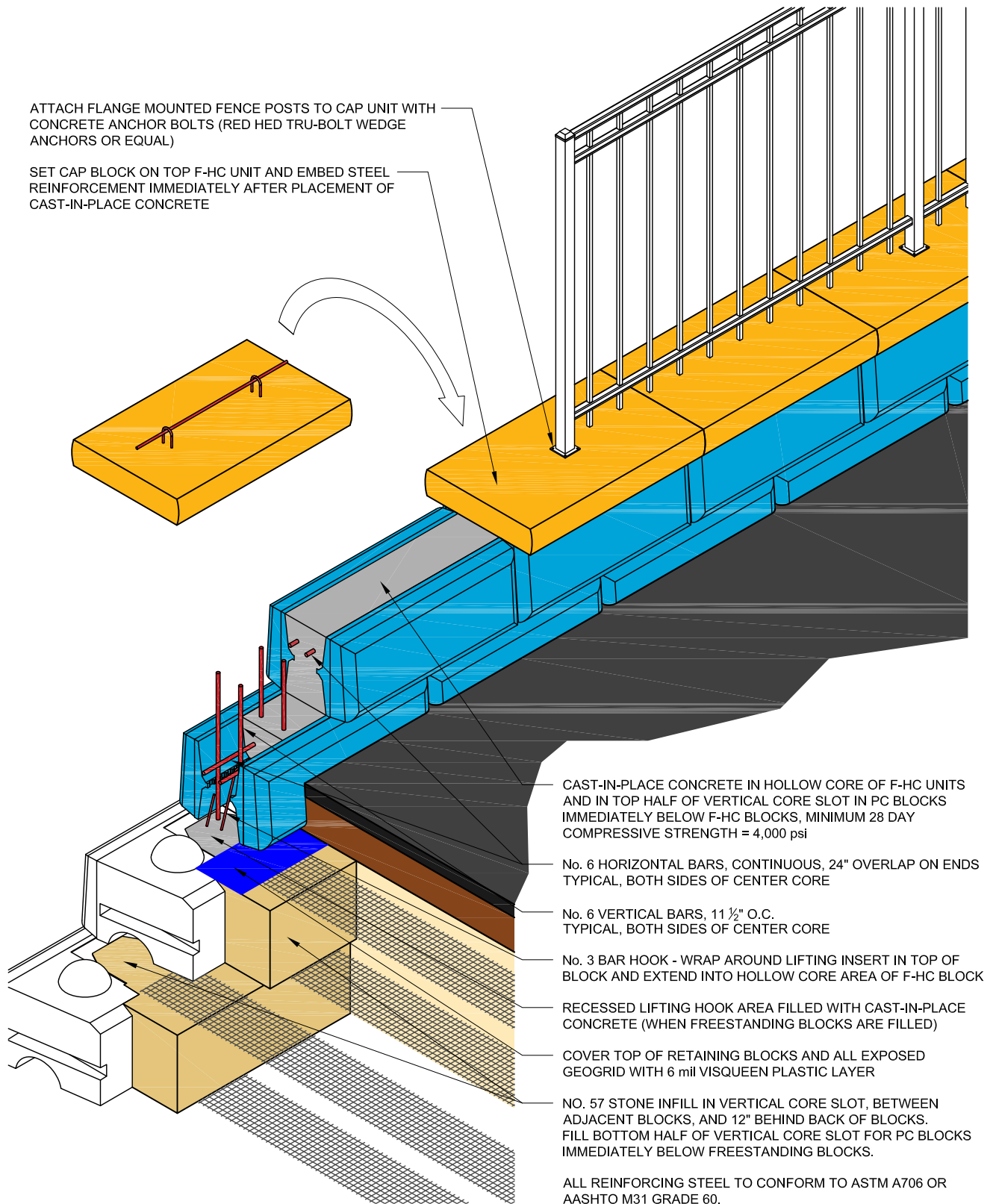
Post and Beam Guardrail

FILE: 7 Post and Beam Guardrail 062215.dwg

REDI-ROCK®
05481 US 31 SOUTH, CHARLEVOIX, MI 49720
(866) 222-8400 ext 3010 • engineering@redi-rock.com
www.redi-rock.com

ATTACH FLANGE MOUNTED FENCE POSTS TO CAP UNIT WITH CONCRETE ANCHOR BOLTS (RED HED TRU-BOLT WEDGE ANCHORS OR EQUAL)

SET CAP BLOCK ON TOP F-HC UNIT AND EMBED STEEL REINFORCEMENT IMMEDIATELY AFTER PLACEMENT OF CAST-IN-PLACE CONCRETE



CAST-IN-PLACE CONCRETE IN HOLLOW CORE OF F-HC UNITS AND IN TOP HALF OF VERTICAL CORE SLOT IN PC BLOCKS IMMEDIATELY BELOW F-HC BLOCKS, MINIMUM 28 DAY COMPRESSIVE STRENGTH = 4,000 psi

No. 6 HORIZONTAL BARS, CONTINUOUS, 24" OVERLAP ON ENDS TYPICAL, BOTH SIDES OF CENTER CORE

No. 6 VERTICAL BARS, 11 1/2" O.C. TYPICAL, BOTH SIDES OF CENTER CORE

No. 3 BAR HOOK - WRAP AROUND LIFTING INSERT IN TOP OF BLOCK AND EXTEND INTO HOLLOW CORE AREA OF F-HC BLOCK

RECESSED LIFTING HOOK AREA FILLED WITH CAST-IN-PLACE CONCRETE (WHEN FREESTANDING BLOCKS ARE FILLED)

COVER TOP OF RETAINING BLOCKS AND ALL EXPOSED GEOGRID WITH 6 mil VISQUEEN PLASTIC LAYER

NO. 57 STONE INFILL IN VERTICAL CORE SLOT, BETWEEN ADJACENT BLOCKS, AND 12" BEHIND BACK OF BLOCKS. FILL BOTTOM HALF OF VERTICAL CORE SLOT FOR PC BLOCKS IMMEDIATELY BELOW FREESTANDING BLOCKS.

ALL REINFORCING STEEL TO CONFORM TO ASTM A706 OR AASHTO M31 GRADE 60.

DRAWN BY: J. JOHNSON

APPROVED BY:

DATE: 01/18/17

SHEET: 1 OF 2

TITLE:

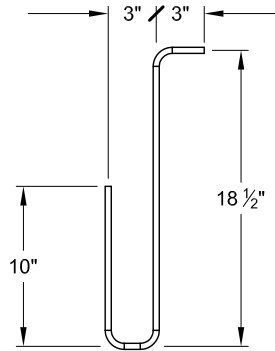
F-HC FREESTANDING BLOCK COPING WITH FENCE ATTACHMENT

FILE: F-HC Coping with Fence Attachment R-Anchor Option 011817.dwg

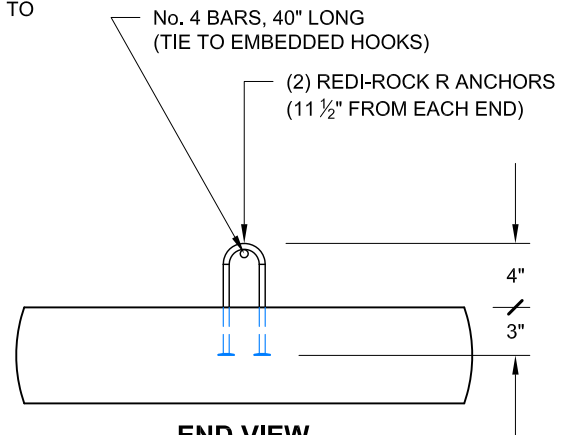
REDI-ROCK

05481 US 31 SOUTH, CHARLEVOIX, MI 49720
(866) 222-8400 ext 3010 • engineering@redi-rock.com
www.redi-rock.com

ALL REINFORCING STEEL TO CONFORM TO
ASTM A706 OR AASHTO M31 GRADE 60.

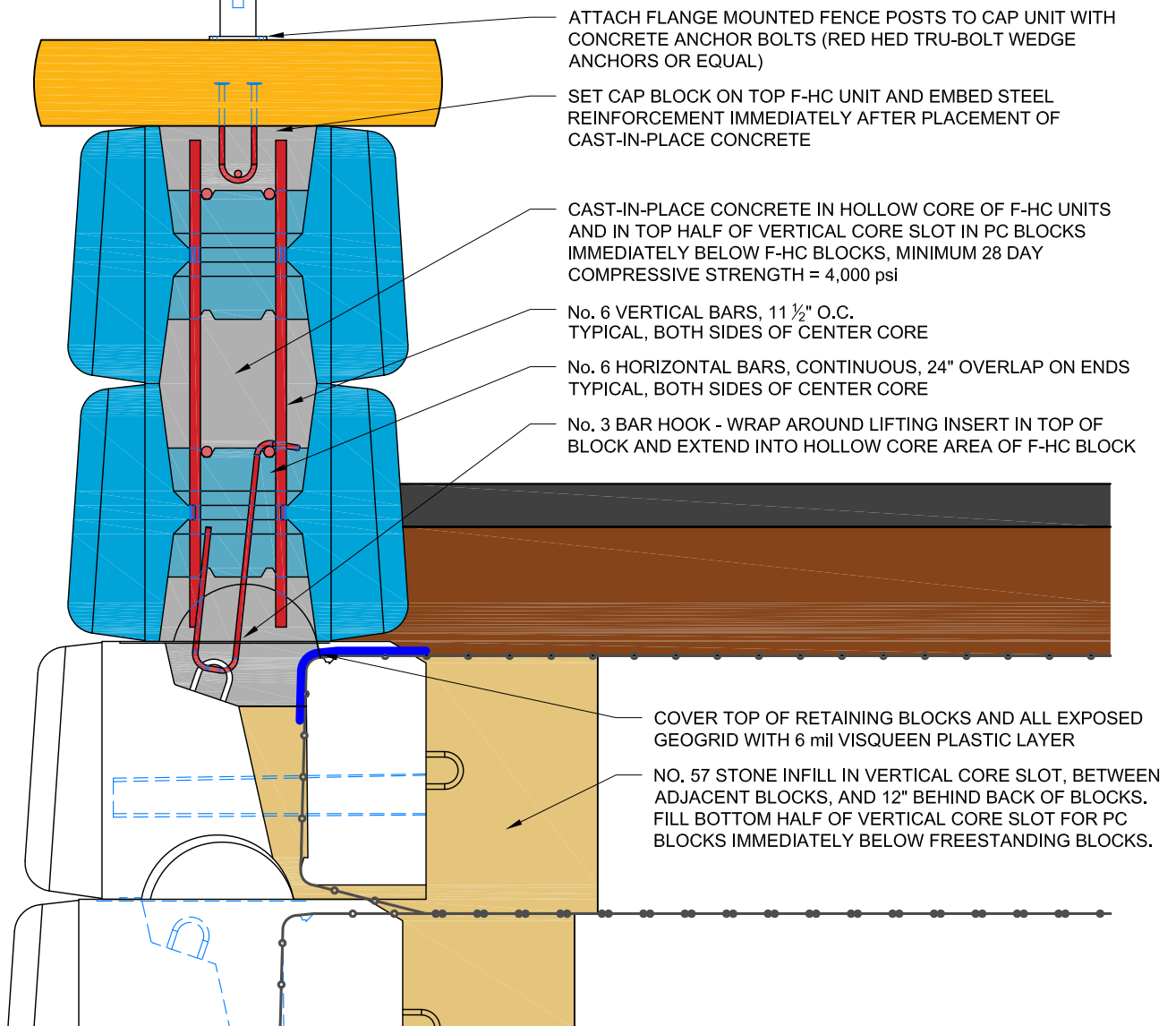


BEND DETAIL
NO. 3 REBAR HOOKS



END VIEW

CAP BLOCK CAST WITH R-ANCHORS (SPECIALTY BLOCK)



DRAWN BY: J. JOHNSON

APPROVED BY:

DATE: 01/18/17

SHEET: 2 OF 2

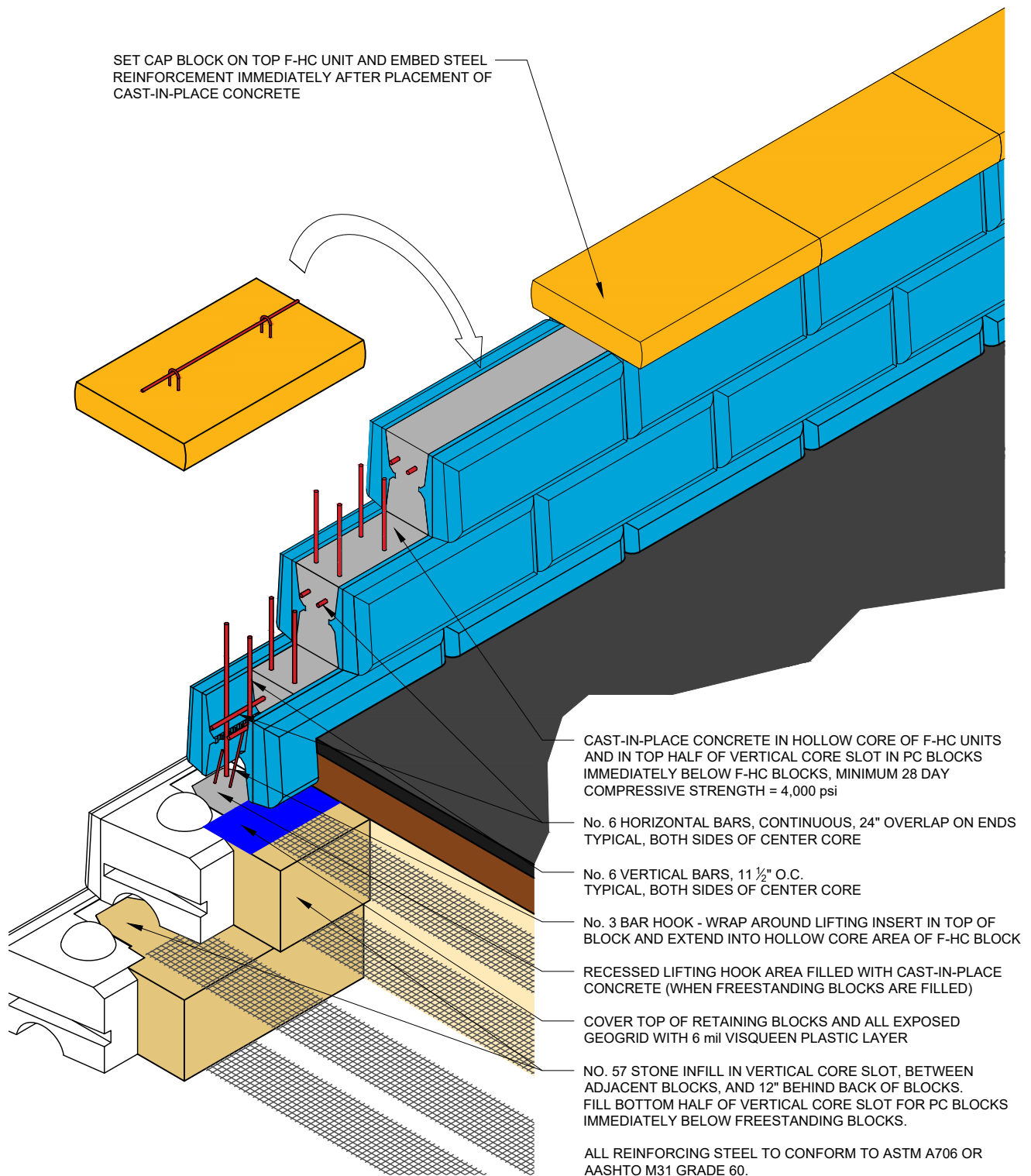
TITLE:

F-HC FREESTANDING BLOCK COPING WITH FENCE ATTACHMENT

FILE: F-HC Coping with Fence Attachment R-Anchor Option 011817.dwg

REDI-ROCK

05481 US 31 SOUTH, CHARLEVOIX, MI 49720
(866) 222-8400 ext 3010 • engineering@redi-rock.com
www.redi-rock.com



DRAWN BY: N. LINDWALL

APPROVED BY: J. JOHNSON

DATE: 06/06/2018

SHEET: 1 OF 1

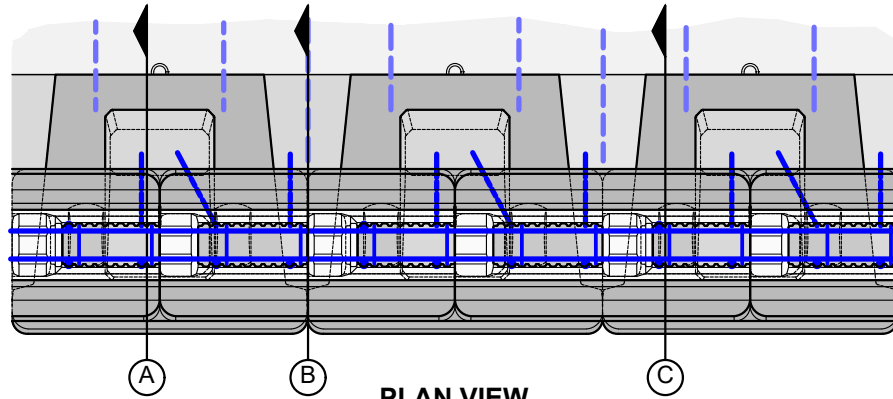
TITLE:

F-HC FREESTANDING BLOCK COPING

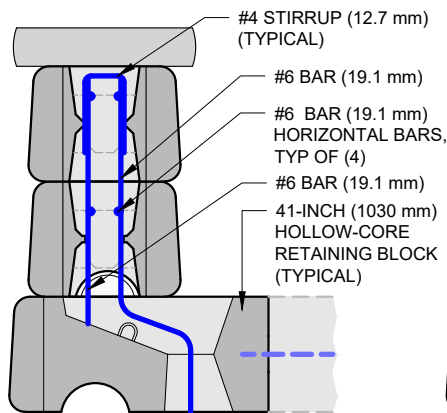
FILE: F-HC Coping R-Anchor Option 060618.dwg

REDI-ROCK

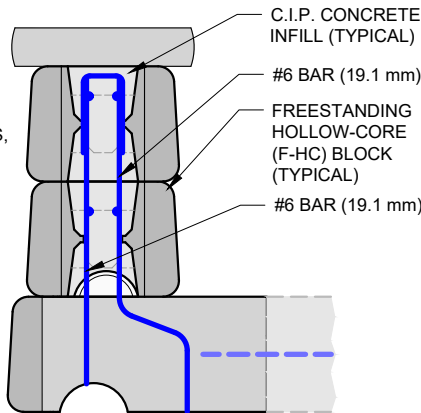
05481 US 31 SOUTH, CHARLEVOIX, MI 49720
(866) 222-8400 ext 3010 • engineering@redi-rock.com
www.redi-rock.com



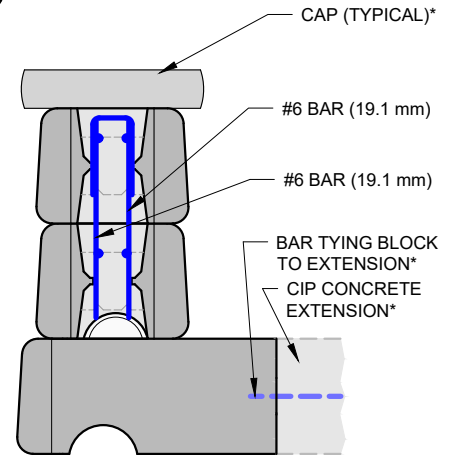
PLAN VIEW



SECTION A

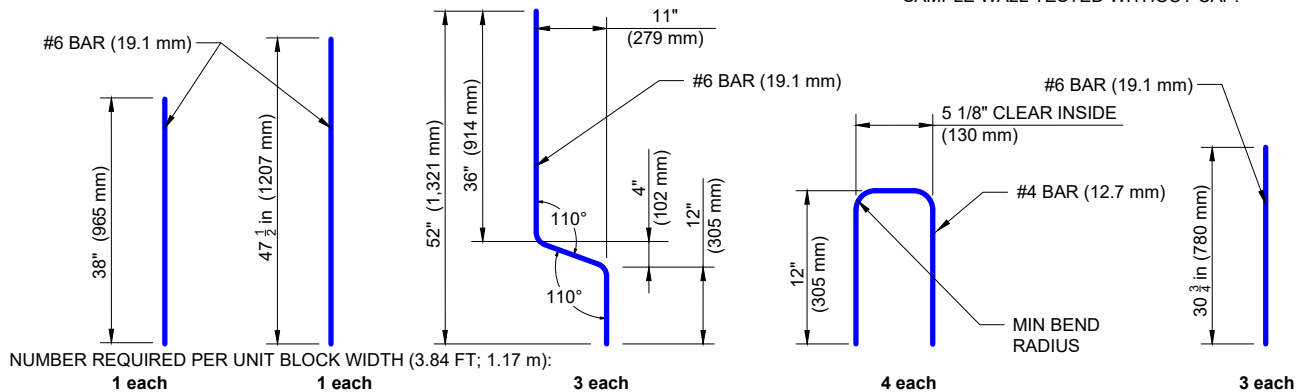


SECTION B



SECTION C

*SAMPLE WALL TESTED WITHOUT CAP.



REINFORCING BAR SCHEDULE

NOTES:

1. DETAIL SHOWN REPRESENTS CONFIGURATION OF SAMPLE WALL TESTED IN ASTER BRANDS TEST FACILITY.
2. SAMPLE WALL EXHIBITED ULTIMATE STRUCTURAL CAPACITY GREATER THAN 63,000 LBS (282 kN) AT A HEIGHT OF 29 1/2 INCHES (750 mm), CONSISTENT WITH AASHTO TL-4 EQUIVALENT STATIC LOADING.
3. C.I.P. CONCRETE INFILL: 4000 psi (27.6 MPa) COMPRESSIVE STRENGTH, REINFORCING STEEL BARS: 60,000 PSI (410 MPa).
4. REFER TO TEST REPORT FOR MORE INFORMATION.
5. USER IS RESPONSIBLE FOR DETERMINING SUITABILITY FOR PROJECT USE.
6. THIS DETAIL IS SHOWN FOR REFERENCE ONLY. DESIGN BY A LICENSED ENGINEER IS REQUIRED.
7. DESIGN MUST ALSO CONSIDER OVERTURNING AND SLIDING RESISTANCE.
8. *CIP CONCRETE EXTENSION OR MOMENT SLAB MAY BE CAST AGAINST BLOCKS TO ADD OVERTURNING AND SLIDING RESISTANCE. TIE TO BLOCKS WITH REINFORCING STEEL, AS NEEDED. (NOT INCLUDED IN TEST.)

DRAWN BY: N. LINDWALL

REVIEWED BY: D. HULA

DATE: 08/26/2021

SHEET: 1 OF 1

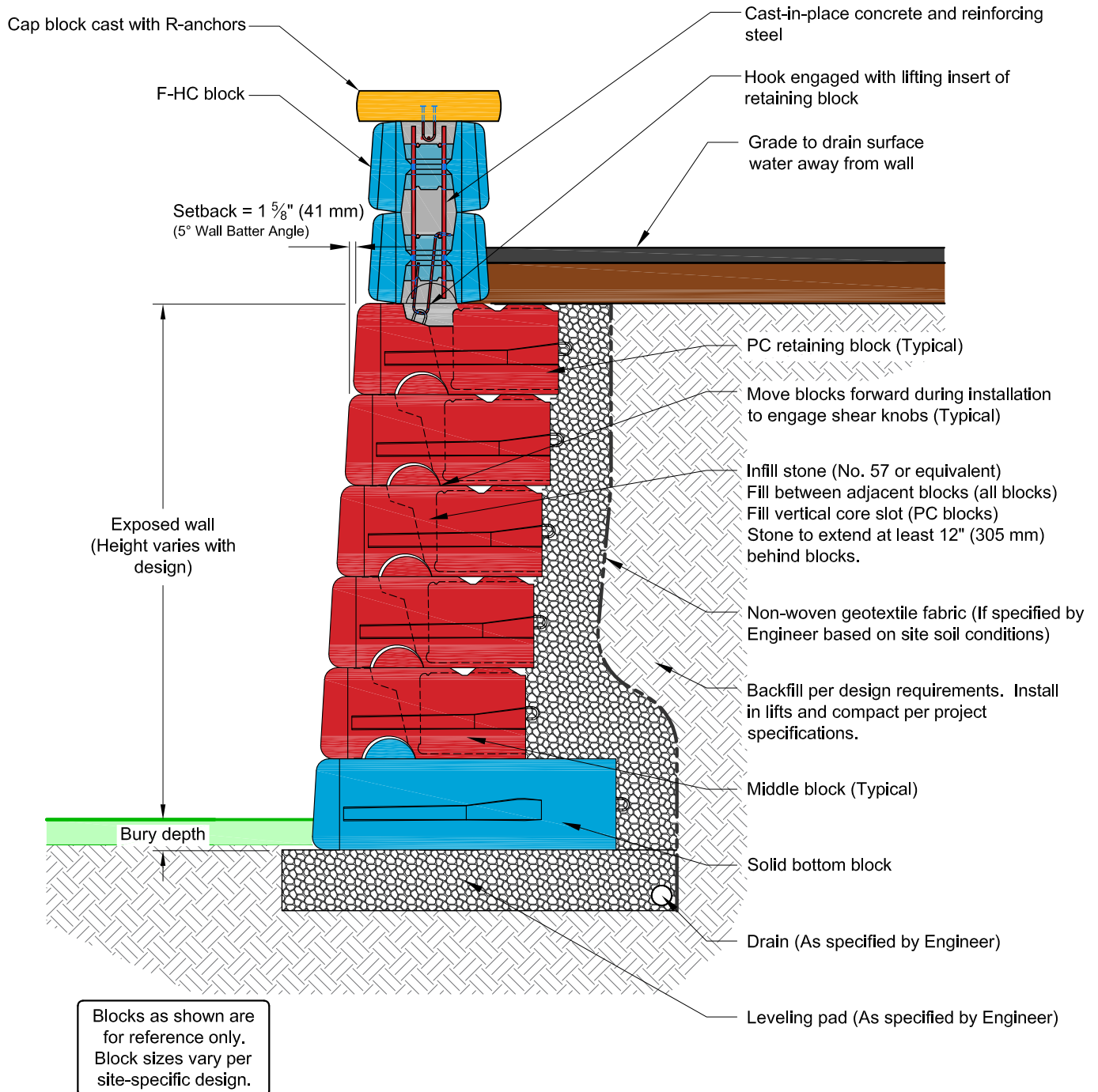
TITLE:

**F-HC FREESTANDING BLOCK
PARAPET/BARRIER CONCEPT**

FILE: F-HC_R-41HC_Parapet_Detail_082621.dwg

REDI-ROCK
2940 Parkview Dr., Petoskey, MI 49770
(866) 222-8400 ext 3010 • engineering@redi-rock.com
www.redi-rock.com

Typical Gravity Wall Section with Freestanding Hollow Core Coping



This drawing is for reference only. Determination of the suitability and/or manner of use of any details contained in this document is the sole responsibility of the design engineer of record. Final project designs, including all construction details, shall be prepared by a licensed professional engineer using the actual conditions of the proposed site.

DRAWN BY: NWL

APPROVED BY: JRJ

DATE: 31MAY2018

SHEET: 1 of 1

TITLE:

Typical Gravity Wall Detail

FILE: Typical-Gravity-Wall-with-F-HC-Section.dwg

REDI-ROCK

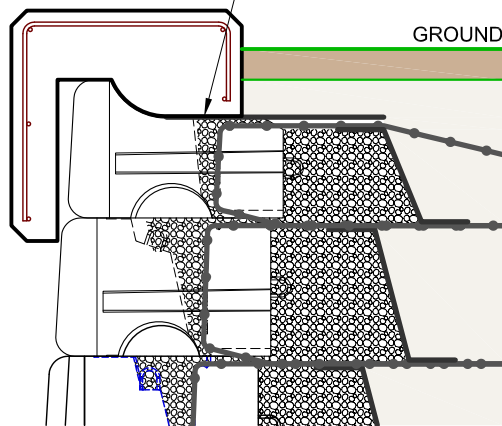
05481 US 31 SOUTH, CHARLEVOIX, MI 49720
(866) 222-8400 ext 3010 • engineering@redi-rock.com
www.redi-rock.com

CAST-IN-PLACE COPING

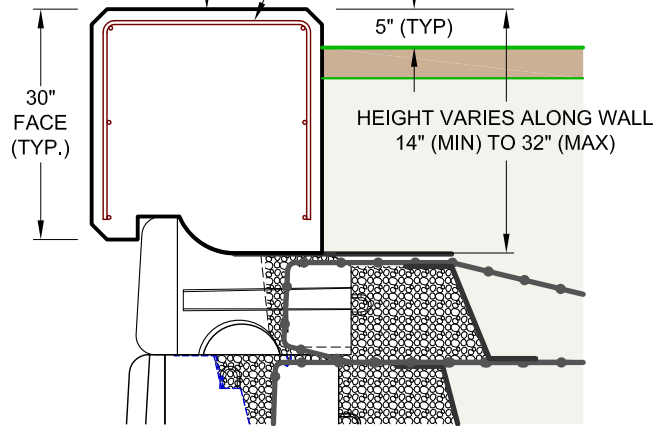
NON-WOVEN GEOTEXTILE OR
GEOMEMBRANE BARRIER
BETWEEN CAST-IN-PLACE
COPING AND TOP OF WALL
(TYP.)

CAST IN PLACE COPING
(DESIGN BY OTHERS)

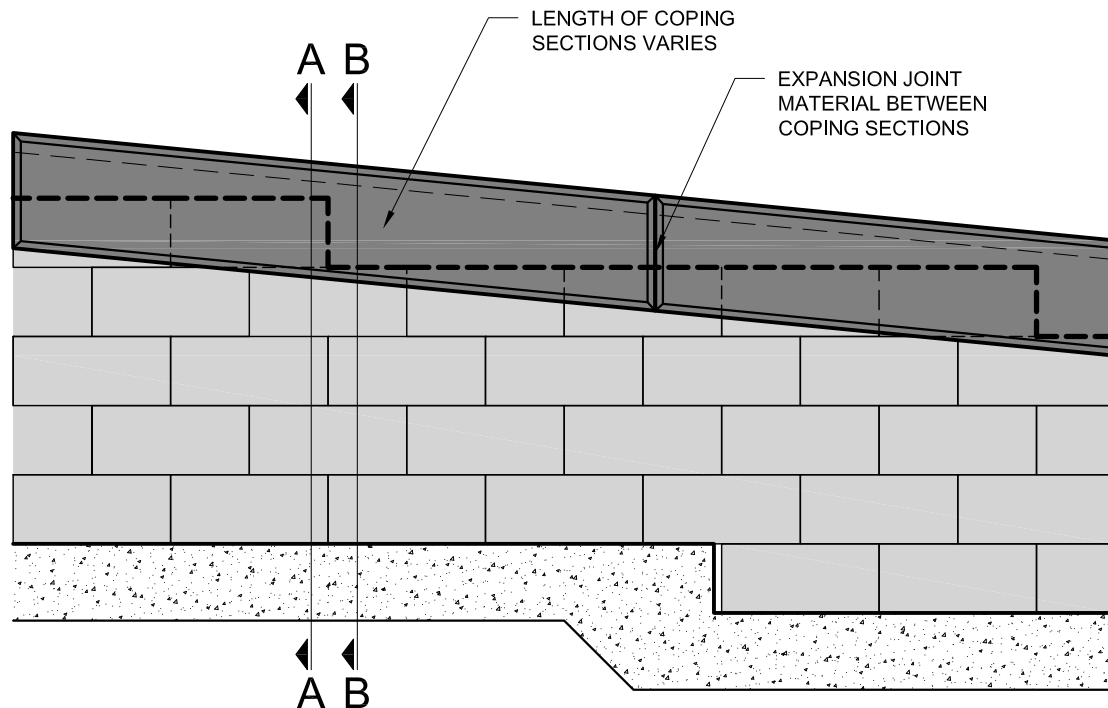
REINFORCEMENT
(DESIGN TO PROJECT
REQUIREMENTS)



SECTION A-A
(JUST BEFORE STEP DOWN
ON TOP OF WALL)



SECTION B-B
(JUST AFTER STEP DOWN
ON TOP OF WALL)



ELEVATION VIEW

DRAWN BY:	JRJ
APPROVED BY:	JRJ
DATE:	06-22-2015
SHEET:	1 of 1

TITLE:	Cast-In-Place Wall Coping
FILE:	

REDI-ROCK®

05481 US 31 SOUTH, CHARLEVOIX, MI 49720
(866) 222-8400 ext 3010 • engineering@redi-rock.com
www.redi-rock.com

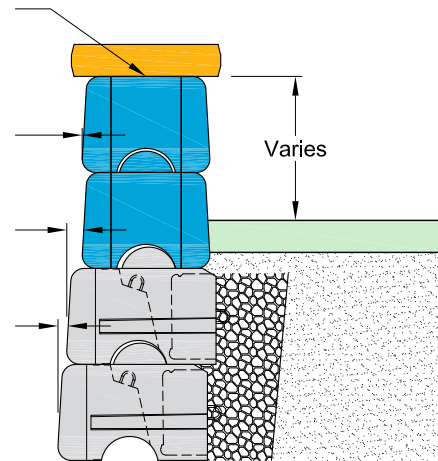
Freestanding Blocks with Cap at Top of Wall

Secure cap block to freestanding block with polyurethane sealant.
Optional shear lugs cast into cap block or rebar ties that can be embedded in site-cast concrete (with garden block) are also available.

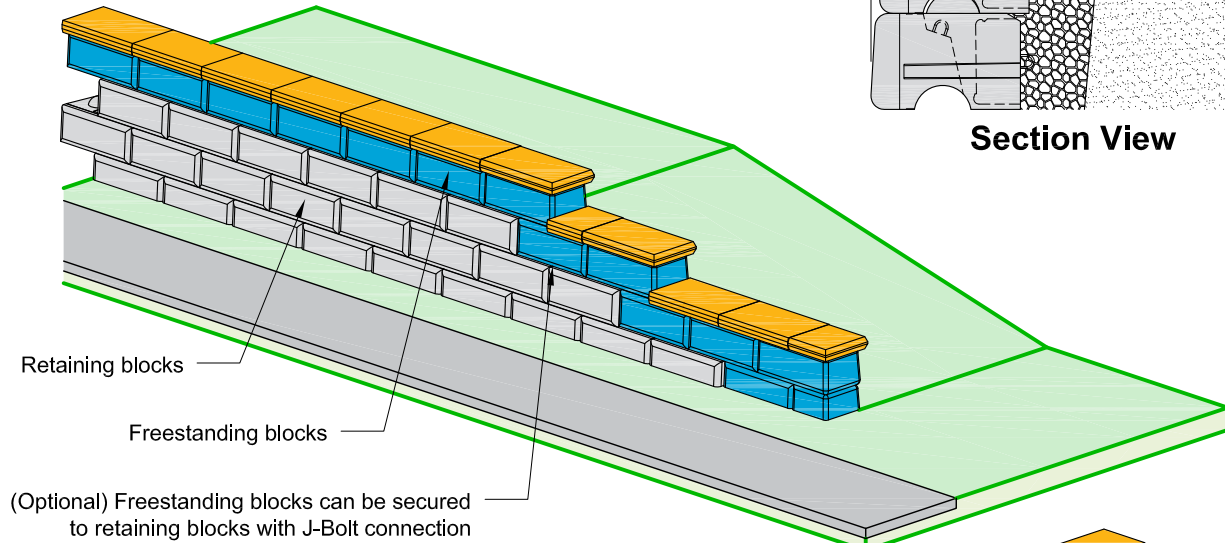
Setback = 0" (0 mm) on Freestanding blocks

Setback = $2\frac{7}{8}$ " (73 mm) when 10" (254 mm) knob used
Setback = $1\frac{5}{8}$ " (41 mm) when $7\frac{1}{2}$ " (190 mm) knob used

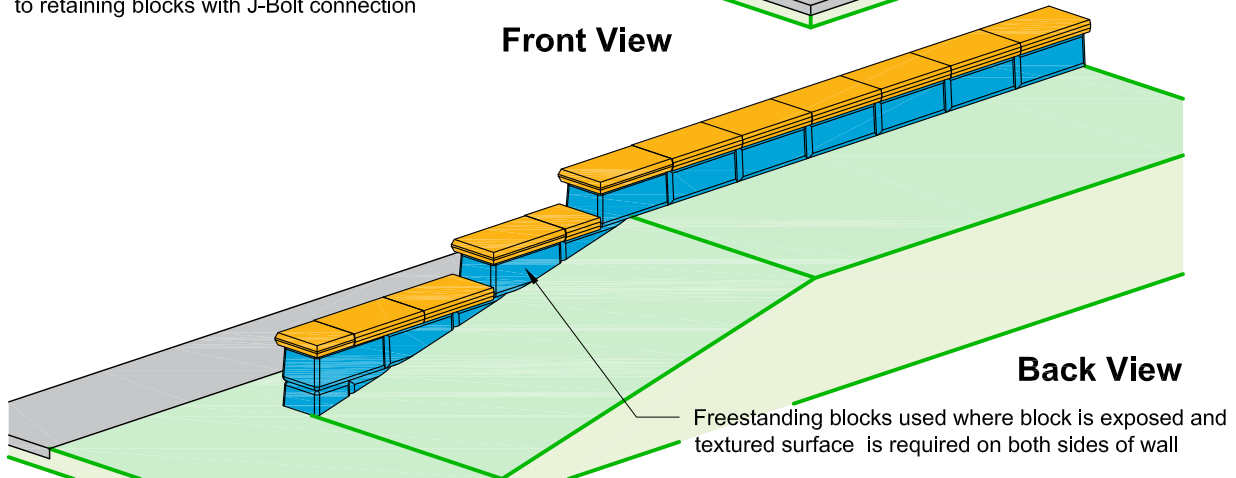
Setback = $1\frac{5}{8}$ " (41 mm) when 10" (254 mm) knob used



Section View



Front View



Back View

One-component, highly flexible, non-priming, gun grade, high performance elastomeric polyurethane sealant shall have movement of plus or minus 25% per ASTM C719, tensile strength greater than 200 psi (1.4 MPa) per ASTM D412, and adhesion to peel on concrete greater than 20 PLI per ASTM C794. Apply sealant in one and one half-inch (1.5") (38 mm) diameter round "hersey kiss" shaped dollops located in two rows at the top of the Freestanding blocks at 8" (203 mm) on center.

This drawing is for reference only. Determination of the suitability and/or manner of use of any details contained in this document is the sole responsibility of the design engineer of record. Final project designs, including all construction details, shall be prepared by a licensed professional engineer using the actual conditions of the proposed site.

DRAWN BY: JRJ
APPROVED BY: JRJ
DATE: 06-22-2015
SHEET: 1 of 1

TITLE: Freestanding Blocks with Cap at Top of Wall
FILE: 3 Freestanding Blocks with Cap at Top of Wall 062215.dwg

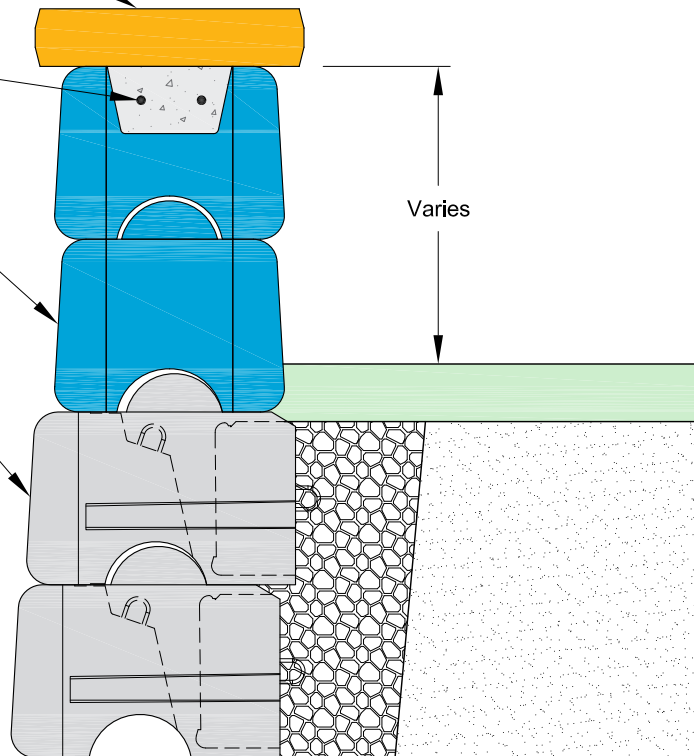
REDI-ROCK®
05481 US 31 SOUTH, CHARLEVOIX, MI 49720
(866) 222-8400 ext 3010 • engineering@redi-rock.com
www.redi-rock.com

Cap Block, Secure to Freestanding Block with Polyurethane Sealant, or Optional Rebar Embedded in Concrete

Freestanding Garden Block with Two (2) Continuous Reinforcing Bars, Filled with Cast-in-Place Concrete, as Designed by Wall Design Engineer

Freestanding Wall Blocks

Retaining Wall Blocks



Section View

Sealant Adhesive: One-component, highly flexible, non-priming, gun grade, high performance elastomeric polyurethane sealant shall have movement of plus or minus 25% per ASTM C719, tensile strength greater than 200 psi (1.4 MPa) per ASTM D412, and adhesion to peel on concrete greater than 20 PLI per ASTM C794. Apply sealant in one and one half-inch (1.5") (38 mm) diameter round "hersey kiss" shaped dollops located in two rows at the top of the Freestanding blocks at 8" (203 mm) on center.

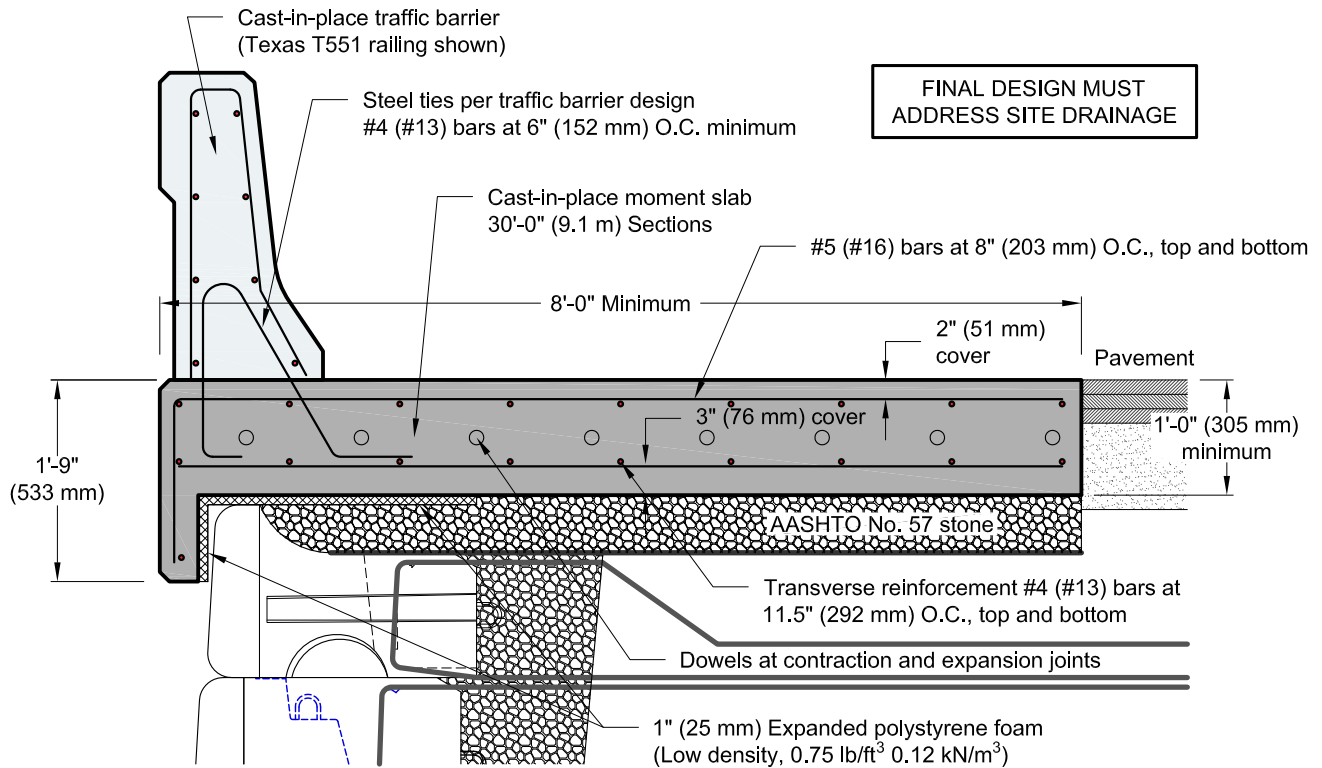
This drawing is for reference only. Determination of the suitability and/or manner of use of any details contained in this document is the sole responsibility of the design engineer of record. Final project designs, including all construction details, shall be prepared by a licensed professional engineer using the actual conditions of the proposed site.

DRAWN BY:	BWL
APPROVED BY:	JRJ
DATE:	01-14-2016
SHEET:	1 of 1

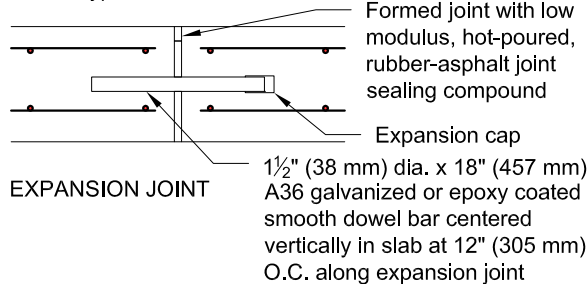
TITLE:	Freestanding Bond Beam at Top of Wall
FILE:	

REDI-ROCK®
 05481 US 31 SOUTH, CHARLEVOIX, MI 49720
 (866) 222-8400 ext 3010 • engineering@redi-rock.com
www.redi-rock.com

Cast-in-Place Moment Slab Traffic Barrier - Flat Grade Installation

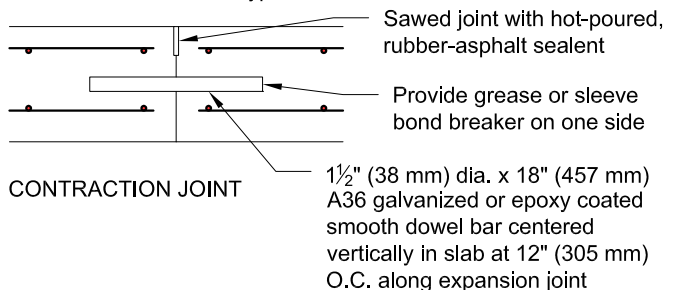


Expansion joints shall be provided in moment slab every 90'-0" (27.4 m). Expansion joint shall be dot standard detail. Typical features shown for reference.



EXPANSION JOINT

Contraction joints shall be provided in moment slab every 30'-0" (9.1 m) between expansion joints. Contraction joint shall be dot standard detail. Typical features shown for reference.



CONTRACTION JOINT

Materials

Concrete for cast-in-place barrier and moment slab shall be dot standard structure mix. Minimum 28 day compressive strength shall be 4,000 psi (27.6 mpa) or higher as specified. Reinforcing steel shall conform to ASTM A706 or AASHTO M31 Grade 60 (420 MPa).

Design

Moment slab shown is dimensioned based on an equivalent static load of 10,000 lbs (44.5 kN) per NCHRP Report 663. Moment slab reinforcement shown is based on *AASHTO LRFD Bridge Design Specifications, 5th edition, 2010*, **TL-4** loading detailed in Table A13.2.1.

The selection and use of this detail, while designed in accordance with generally accepted engineering principles and practices, is the sole responsibility of the registered professional engineer in charge of the project.

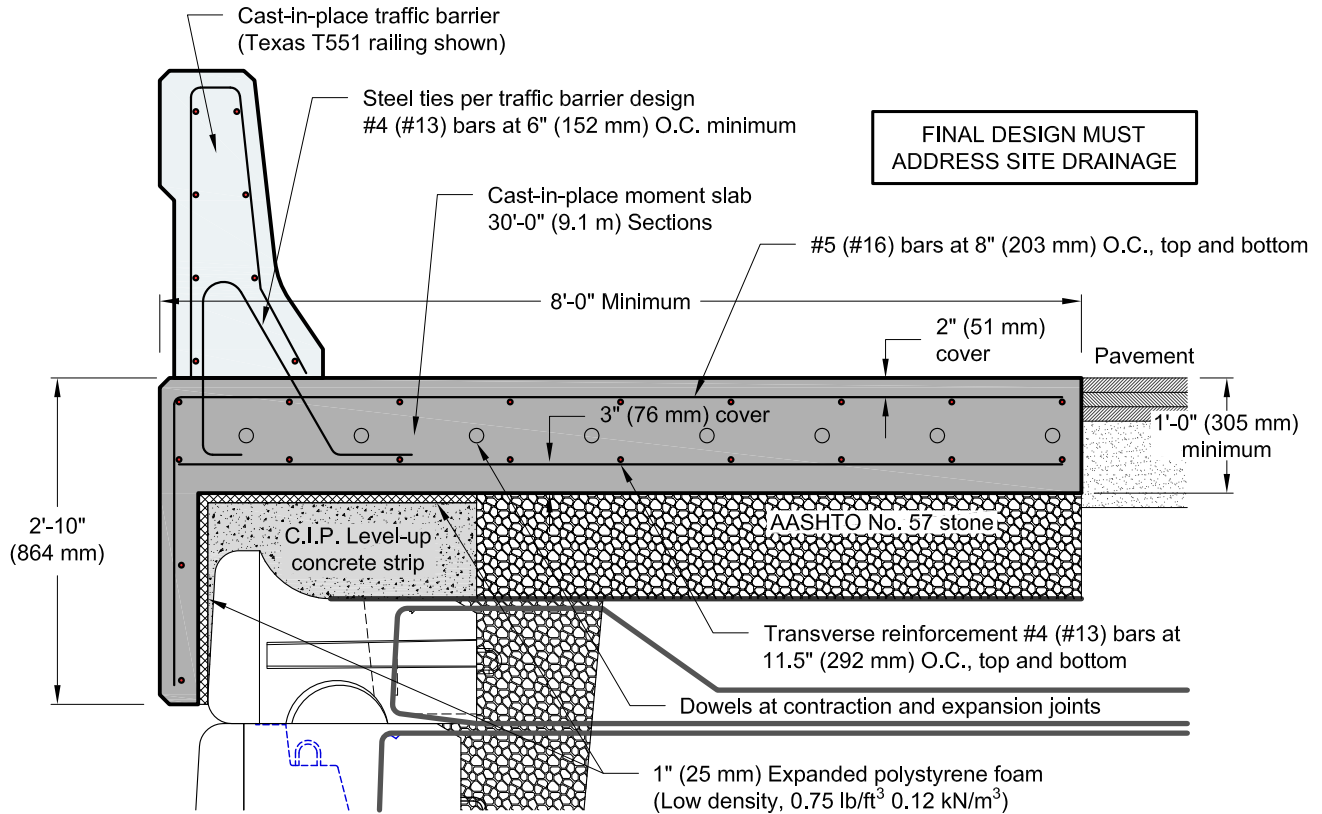
This drawing is for reference only. Determination of the suitability and/or manner of use of any details contained in this document is the sole responsibility of the design engineer of record. Final project designs, including all construction details, shall be prepared by a licensed professional engineer using the actual conditions of the proposed site.

DRAWN BY: JRJ
APPROVED BY: JRJ
DATE: 06-22-2015
SHEET: 1 of 1

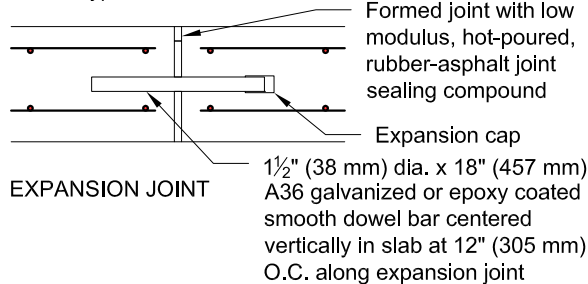
TITLE: Cast-In-Place Moment Slab Traffic Barrier - Flat Grade
FILE: 9 Cast-In-Place Moment Slab Traffic Barrier - Flat 062215.dwg

REDI-ROCK®
05481 US 31 SOUTH, CHARLEVOIX, MI 49720
(866) 222-8400 ext 3010 • engineering@redi-rock.com
www.redi-rock.com

Cast-in-Place Moment Slab Traffic Barrier - Sloping Installation



Expansion joints shall be provided in moment slab every 90'-0" (27.4 m). Expansion joint shall be dot standard detail. Typical features shown for reference.



Materials

Concrete for cast-in-place barrier and moment slab shall be dot standard structure mix. Minimum 28 day compressive strength shall be 4,000 psi (27.6 mpa) or higher as specified. Cast-In-Place level up concrete shall be manufactured in accordance with ASTM C94. Minimum 28 day compressive strength shall be 3,500 psi (24.1 MPa) or higher as specified. Reinforcing steel shall conform to ASTM A706 or AASHTO M31 Grade 60 (420 MPa).

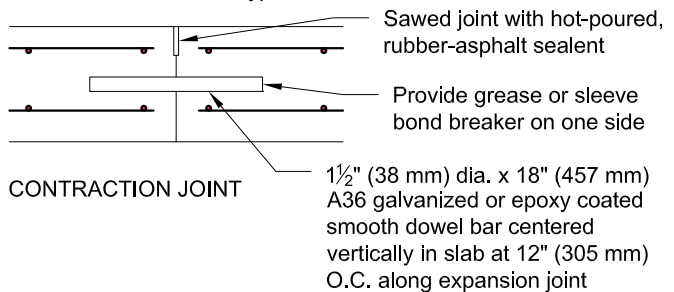
Design

Moment slab shown is dimensioned based on an equivalent static load of 10,000 lbs (44.5 kN) per NCHRP Report 663. Moment slab reinforcement shown is based on *AASHTO LRFD Bridge Design Specifications, 5th edition, 2010*, **TL-4** loading detailed in Table A13.2.1.

The selection and use of this detail, while designed in accordance with generally accepted engineering principles and practices, is the sole responsibility of the registered professional engineer in charge of the project.

This drawing is for reference only. Determination of the suitability and/or manner of use of any details contained in this document is the sole responsibility of the design engineer of record. Final project designs, including all construction details, shall be prepared by a licensed professional engineer using the actual conditions of the proposed site.

Contraction joints shall be provided in moment slab every 30'-0" (9.1 m) between expansion joints. Contraction joint shall be dot standard detail. Typical features shown for reference.

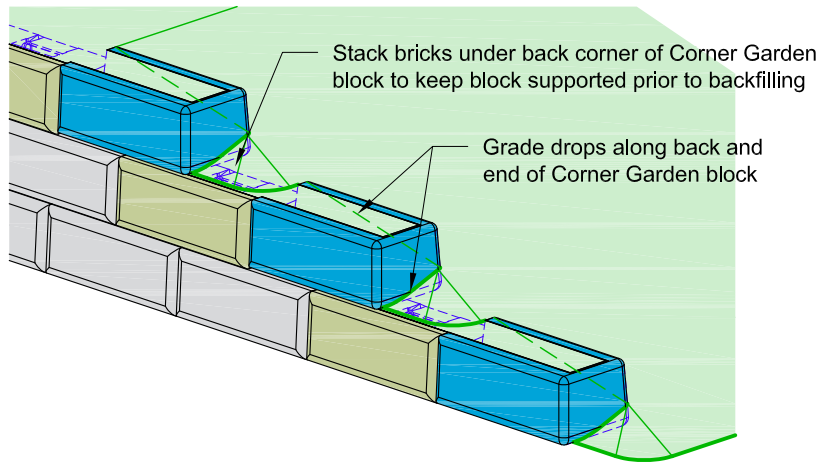


DRAWN BY: JRJ
APPROVED BY: JRJ
DATE: 06-22-2015
SHEET: 1 of 1

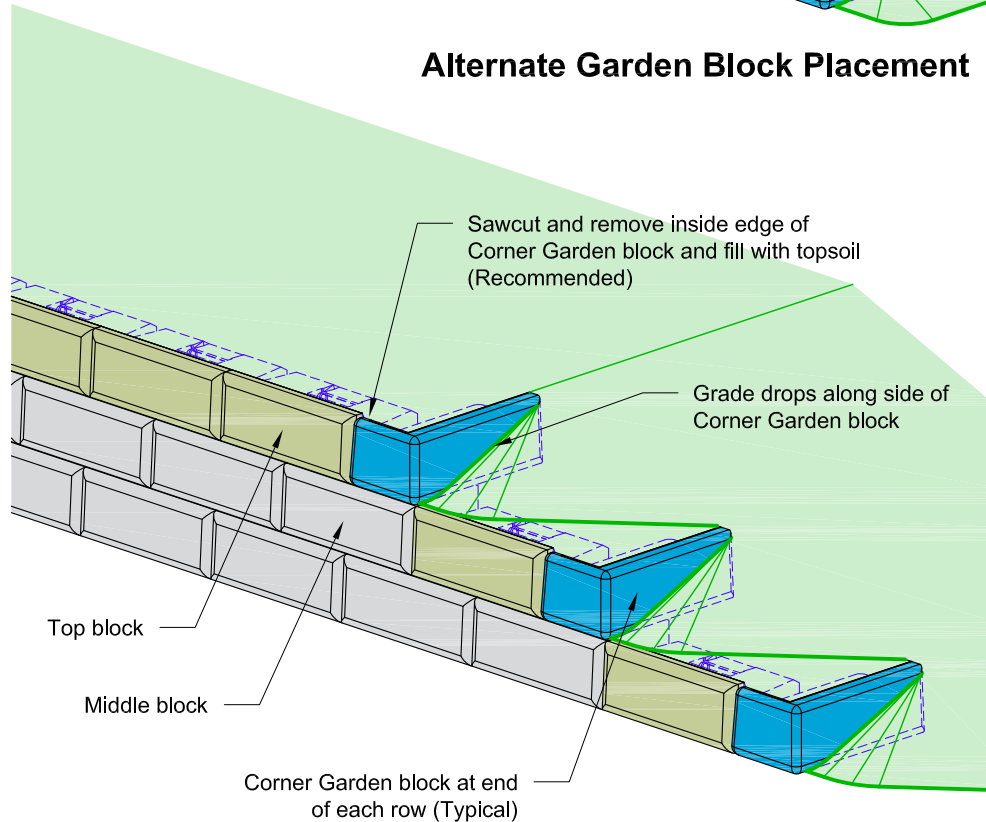
TITLE: Cast-In-Place Moment Slab Traffic Barrier - Sloping Grade
FILE: 10 CIP Moment Slab Traffic Barrier - Sloping 062215.dwg

REDI-ROCK®
05481 US 31 SOUTH, CHARLEVOIX, MI 49720
(866) 222-8400 ext 3010 • engineering@redi-rock.com
www.redi-rock.com

Top of Wall Step Options



Alternate Garden Block Placement



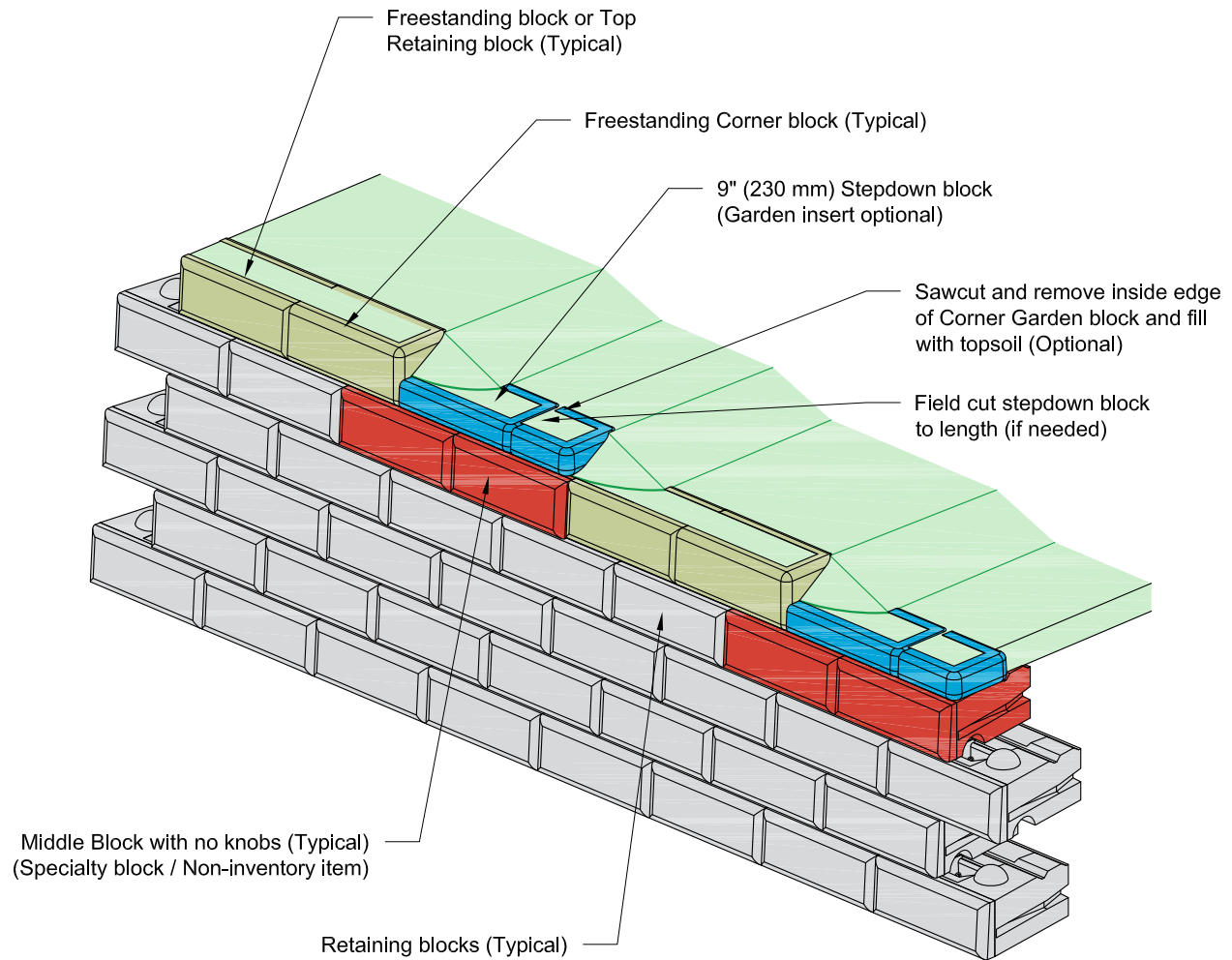
This drawing is for reference only. Determination of the suitability and/or manner of use of any details contained in this document is the sole responsibility of the design engineer of record. Final project designs, including all construction details, shall be prepared by a licensed professional engineer using the actual conditions of the proposed site.

DRAWN BY: JRJ
 APPROVED BY: JRJ
 DATE: 06-22-2015
 SHEET: 1 of 1


TITLE: Top of Wall Step Options
 FILE: 1 Top of Wall Step Options 062215.dwg

REDI-ROCK®
 05481 US 31 SOUTH, CHARLEVOIX, MI 49720
 (866) 222-8400 ext 3010 • engineering@red-rock.com
www.red-rock.com

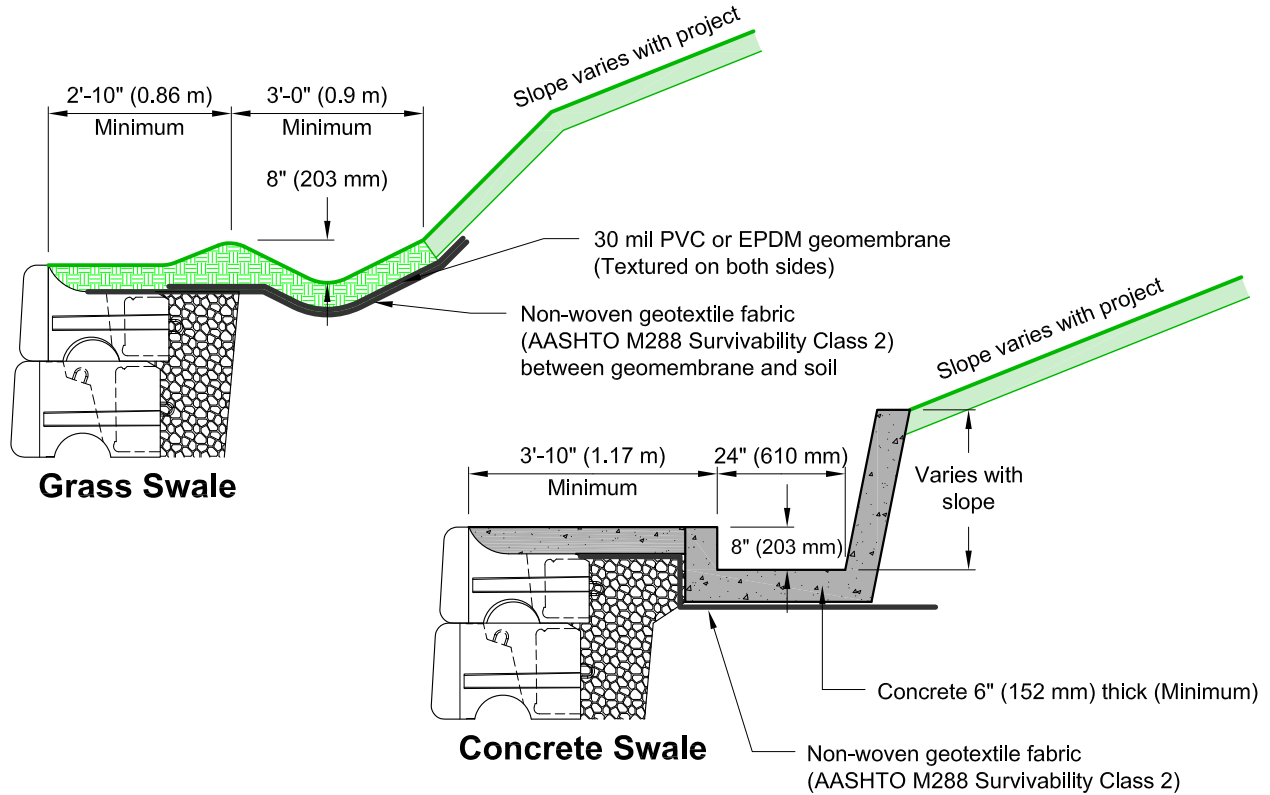
Top of Wall 9" (230 mm) Stepdown Blocks



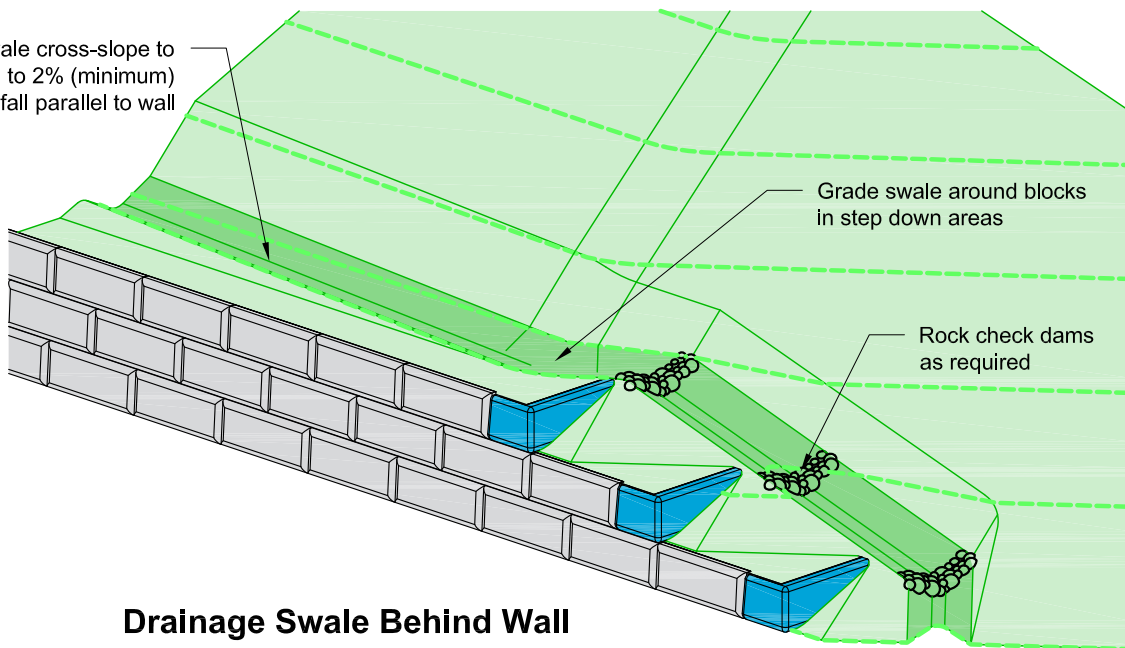
This drawing is for reference only. Determination of the suitability and/or manner of use of any details contained in this document is the sole responsibility of the design engineer of record. Final project designs, including all construction details, shall be prepared by a licensed professional engineer using the actual conditions of the proposed site.

DRAWN BY:	JRJ	TITLE:	Top of Wall, 9" Stepdown Blocks	
APPROVED BY:	JRJ			
DATE:	06-22-2015			
SHEET:	1 of 1	FILE:		
			2 Top of Wall 9in Stepdown Blocks 062215.dwg	05481 US 31 SOUTH, CHARLEVOIX, MI 49720 (866) 222-8400 ext 3010 • engineering@redi-rock.com www.redi-rock.com

Drainage Swale Options



Grade swale cross-slope to provide 1% to 2% (minimum) fall parallel to wall



Drainage Swale Behind Wall

This drawing is for reference only. Determination of the suitability and/or manner of use of any details contained in this document is the sole responsibility of the design engineer of record. Final project designs, including all construction details, shall be prepared by a licensed professional engineer using the actual conditions of the proposed site.

DRAWN BY: JRJ
 APPROVED BY: JRJ
 DATE: 06-22-2015
 SHEET: 1 of 1

TITLE:

Drainage Swale Options

FILE: 4 Drainage Swale Options 062215.dwg

REDI-ROCK®
 05481 US 31 SOUTH, CHARLEVOIX, MI 49720
 (866) 222-8400 ext 3010 • engineering@redi-rock.com
www.redi-rock.com