



**REDI-ROCK®**

# FREESTANDING HOLLOW CORE DESIGN RESOURCES

# Freestanding Hollow Core Resources

## Table of Contents

---

<b>3</b>	<b>Block Library</b>
<b>4</b>	<b>Design Details</b>
<b>5</b>	<b>Typical Cantilever Wall Section</b>
<b>6</b>	<b>F-HC Freestanding Block Coping With Fence Attachment</b>
<b>8</b>	<b>Corner Details</b>
<b>9</b>	<b>Flood Control Wall Section</b>
<b>11</b>	<b>Waterstop Option</b>

---

---



The Redi-Rock logo is a registered trademark of Redi-Rock International, LLC of Charlevoix, MI USA.

The Redi-Rock name is a copyright of Redi-Rock International, LLC of Charlevoix, MI USA.

The information contained in the Design Resource Manual (DRM) has been compiled by Redi-Rock International, LLC to document the performance of the Redi-Rock products contained therein. It is accurate to the best of our knowledge as of the date of its issue. Information included in the DRM has been prepared in accordance with generally recognized engineering principles and practices. This information should not be used without first securing competent advice with respect to its suitability for any general or specific application. Final determination of the suitability of any design information and the appropriateness of this data for a given design purpose is the sole responsibility of the user.

No warranty of performance by Redi-Rock International, LLC or the DRM authors is expressed or implied by the publishing of the following DRM.

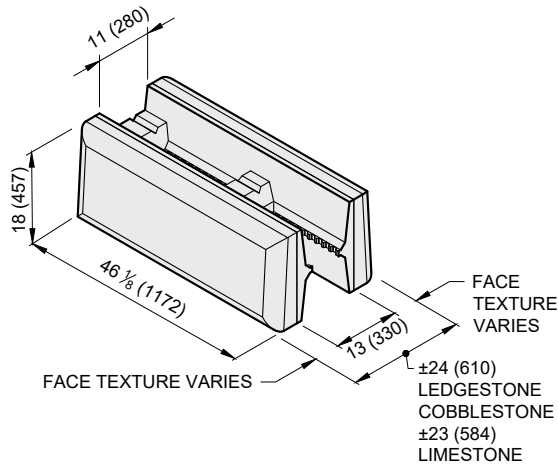
Issue Date: July 1, 2021



## BLOCK LIBRARY

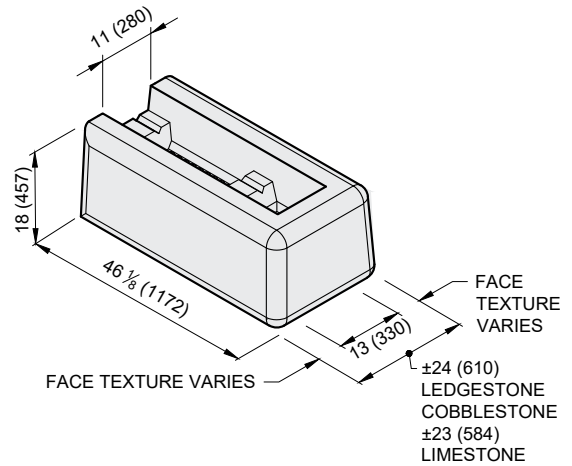
### F-HC HOLLOW CORE

Face Texture:	Cobble / Limestone	Ledgestone
Block Weight:	913 lb (414 kg)	770 lb (349 kg)
Block Volume:	6.38 ft <sup>3</sup> (0.181 m <sup>3</sup> )	5.38 ft <sup>3</sup> (0.152 m <sup>3</sup> )



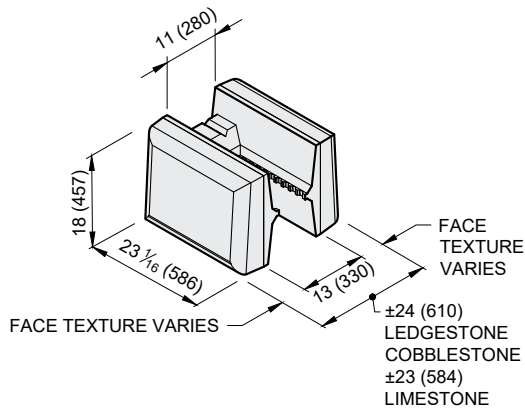
### F-CHC CORNER HOLLOW CORE

Face Texture:	Cobble / Limestone	Ledgestone
Block Weight:	1002 lb (455 kg)	972 lb (441 kg)
Block Volume:	7.01 ft <sup>3</sup> (0.198 m <sup>3</sup> )	6.80 ft <sup>3</sup> (0.192 m <sup>3</sup> )



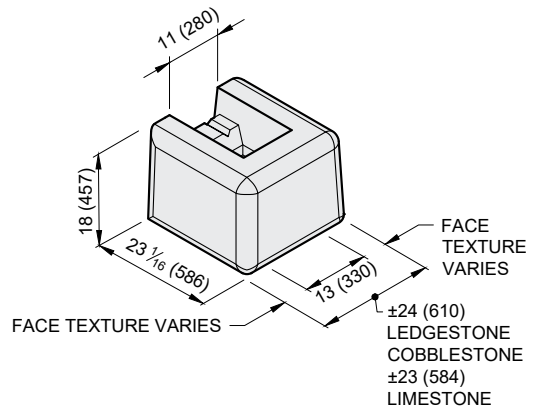
### F-HHC HALF HOLLOW CORE

Face Texture:	Cobble / Limestone	Ledgestone
Block Weight:	456 lb (207 kg)	385 lb (175 kg)
Block Volume:	3.19 ft <sup>3</sup> (0.090 m <sup>3</sup> )	2.69 ft <sup>3</sup> (0.076 m <sup>3</sup> )



### F-HCHC HALF CORNER HOLLOW CORE

Face Texture:	Cobble / Limestone	Ledgestone
Block Weight:	545 lb (247 kg)	505 lb (229 kg)
Block Volume:	3.81 ft <sup>3</sup> (0.108 m <sup>3</sup> )	3.53 ft <sup>3</sup> (0.100 m <sup>3</sup> )

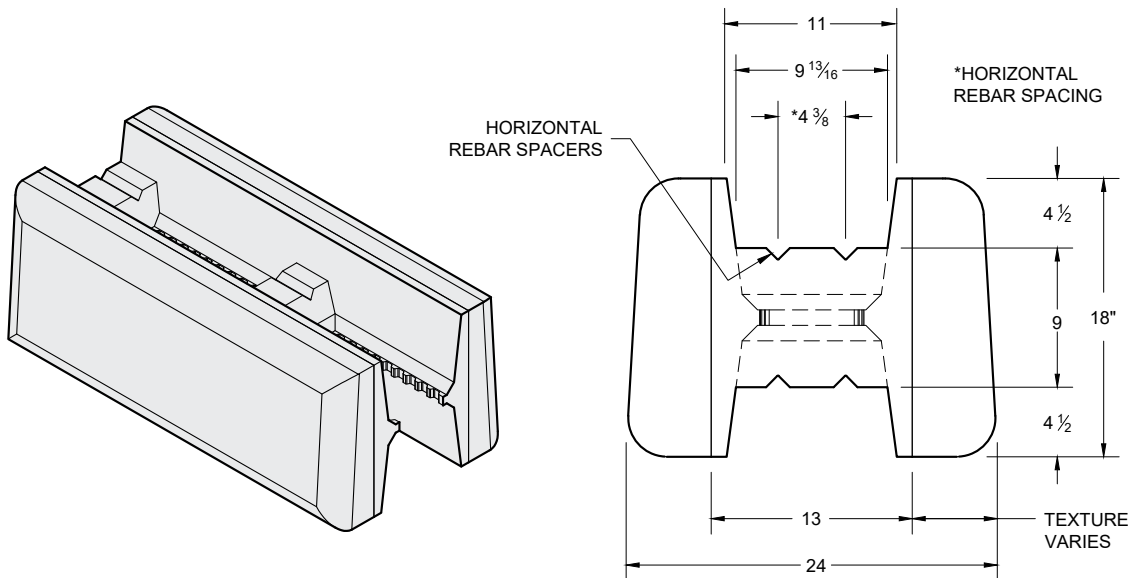


1. Units for dimensions are inches (mm), typical unless noted otherwise.
2. Confirm block production with licensed Redi-Rock manufacturer.
3. Architectural faces on the blocks have varying texture.
4. Average block weights shown. Actual block volumes and weights may vary.
5. Weights are based upon a concrete density of 143 lb/ft<sup>3</sup> (2291 kg/m<sup>3</sup>).

## DESIGN DETAILS

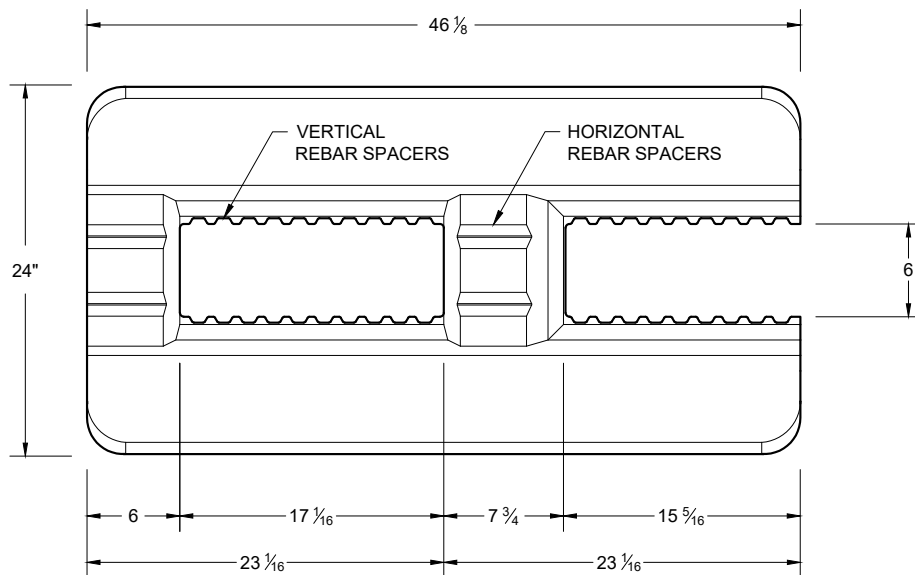
### F-HC HOLLOW CORE

Face Texture:	Cobble / Limestone	Ledgestone
Block Weight:	913 lb (414 kg)	770 lb (349 kg)
Block Volume:	6.38 ft <sup>3</sup> (0.181 m <sup>3</sup> )	5.38 ft <sup>3</sup> (0.152 m <sup>3</sup> )
Core Volume:	4.09 ft <sup>3</sup> (0.116 m <sup>3</sup> )	4.09 ft <sup>3</sup> (0.116 m <sup>3</sup> )



**3D VIEW**

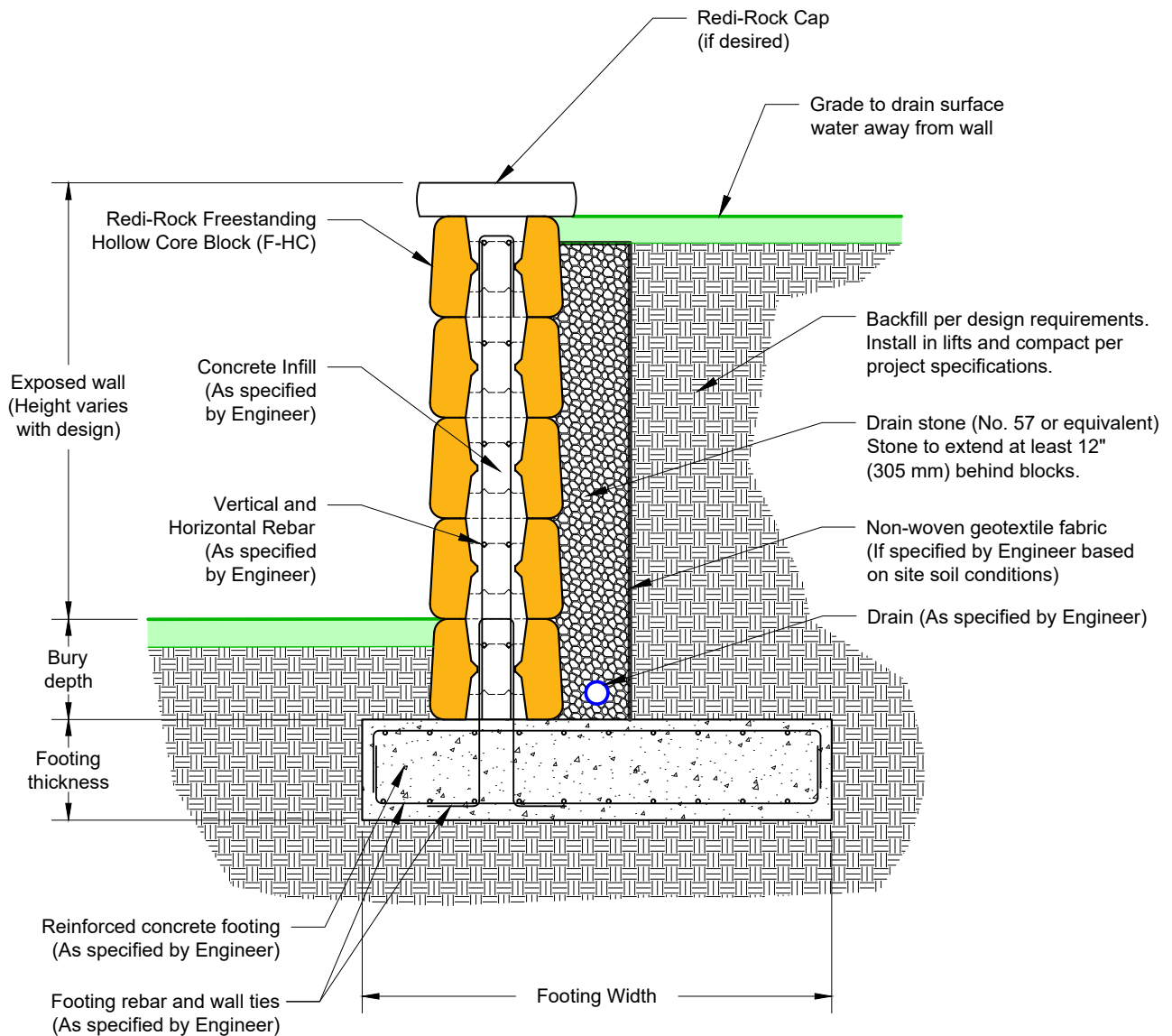
**END VIEW**



**TOP VIEW**

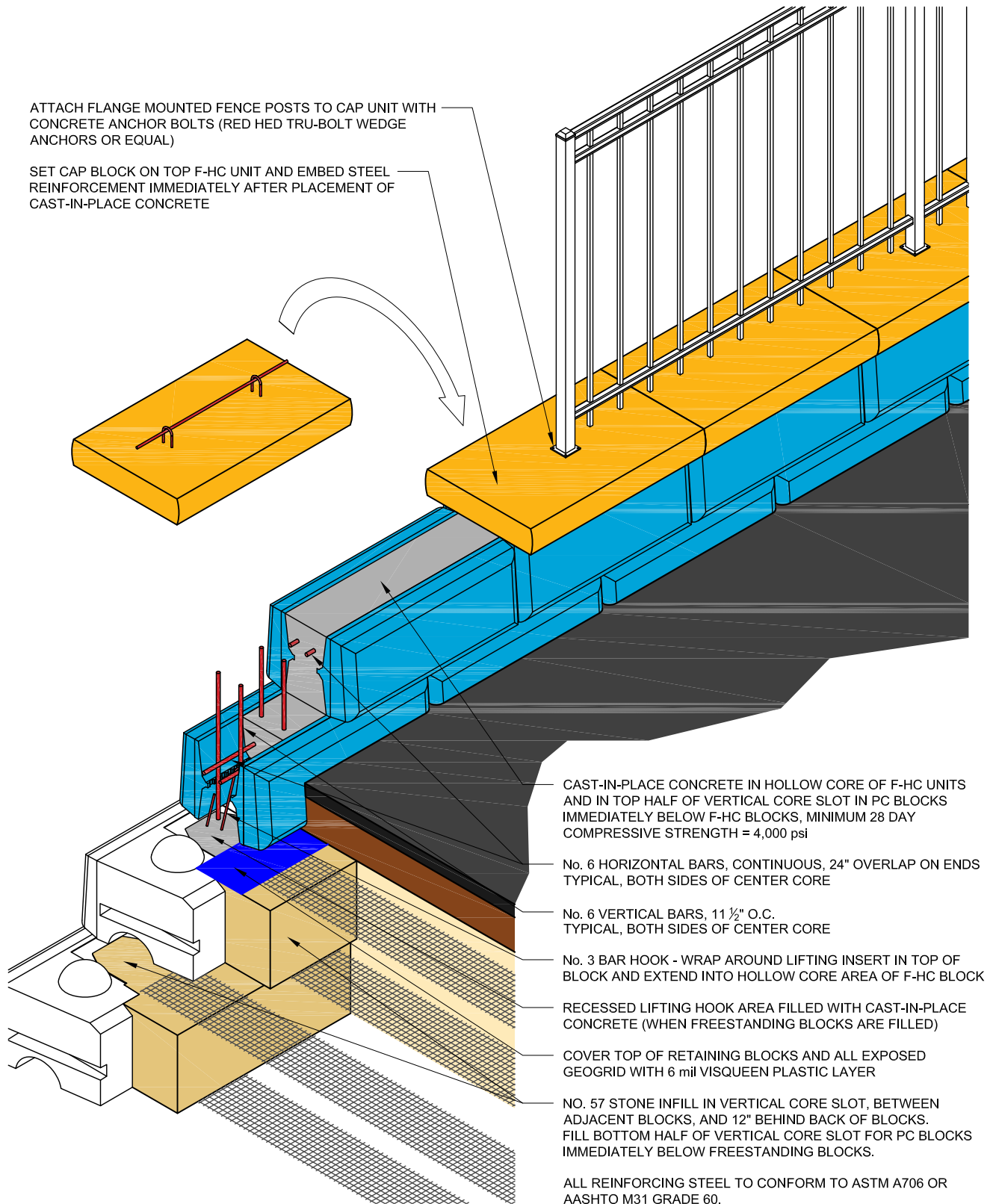
1. Units for dimensions are inches (mm), typical unless noted otherwise.
2. Confirm block production with licensed Redi-Rock manufacturer.
3. Architectural faces on the blocks have varying texture.
4. Average block weights shown. Actual block volumes and weights may vary.
5. Weights are based upon a concrete density of 143 lb/ft<sup>3</sup> (2291 kg/m<sup>3</sup>).

## TYPICAL CANTILEVER WALL SECTION

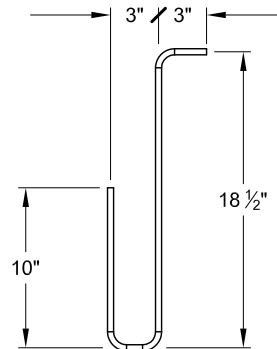


This drawing is for reference only. Determination of the suitability and/or manner of use of any details contained in this document is the sole responsibility of the design engineer of record. Final project designs, including all construction details, shall be prepared by a licensed professional engineer using the actual conditions of the proposed site. Final wall design must address both internal and external drainage and all modes of wall stability.

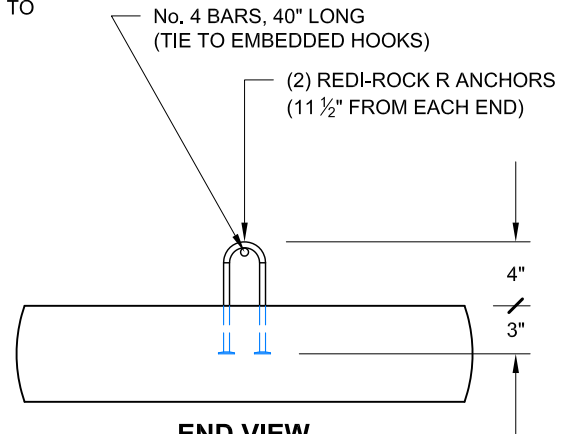
## F-HC FREESTANDING BLOCK COPING WITH FENCE ATTACHMENT



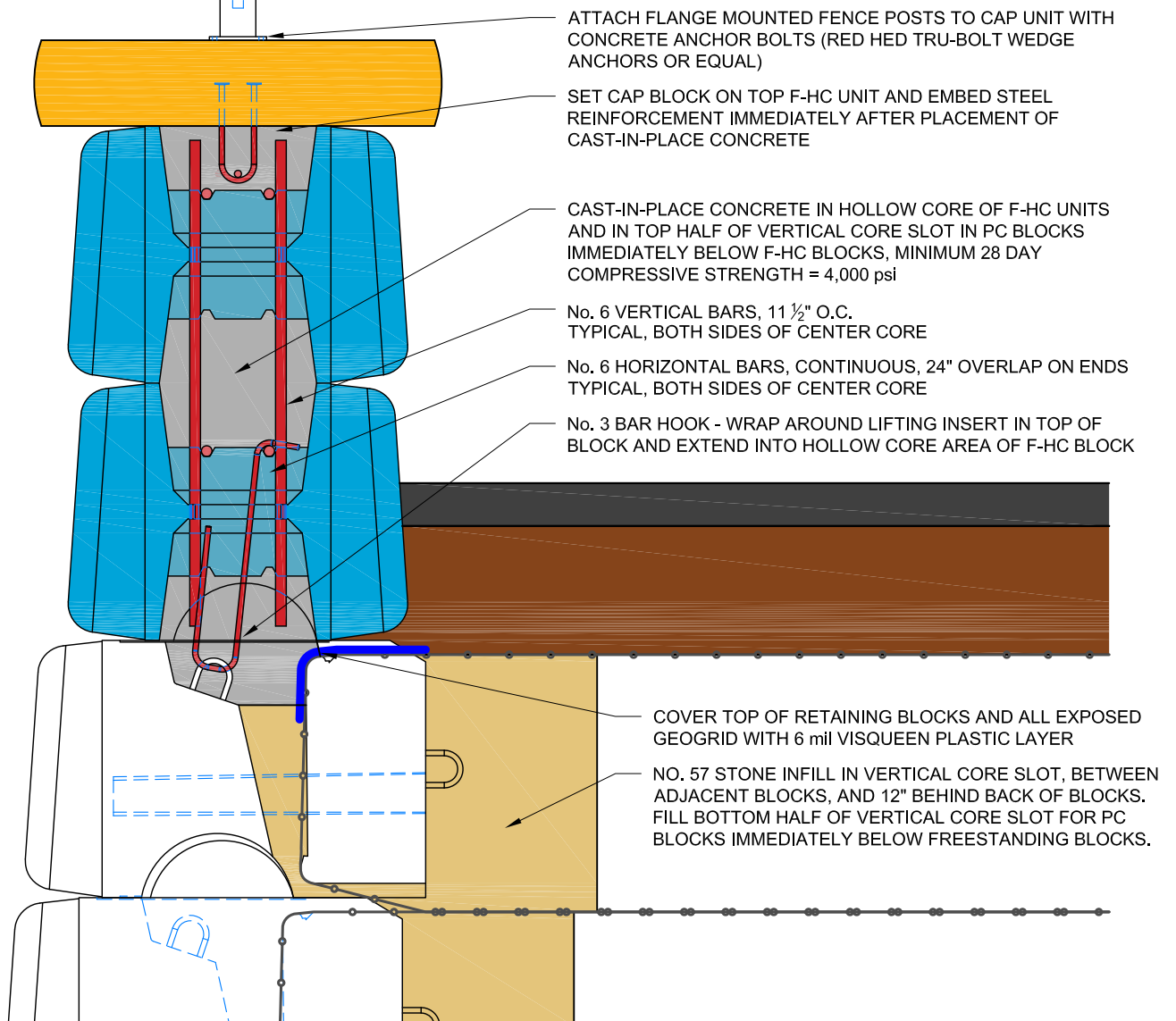
ALL REINFORCING STEEL TO CONFORM TO  
ASTM A706 OR AASHTO M31 GRADE 60.



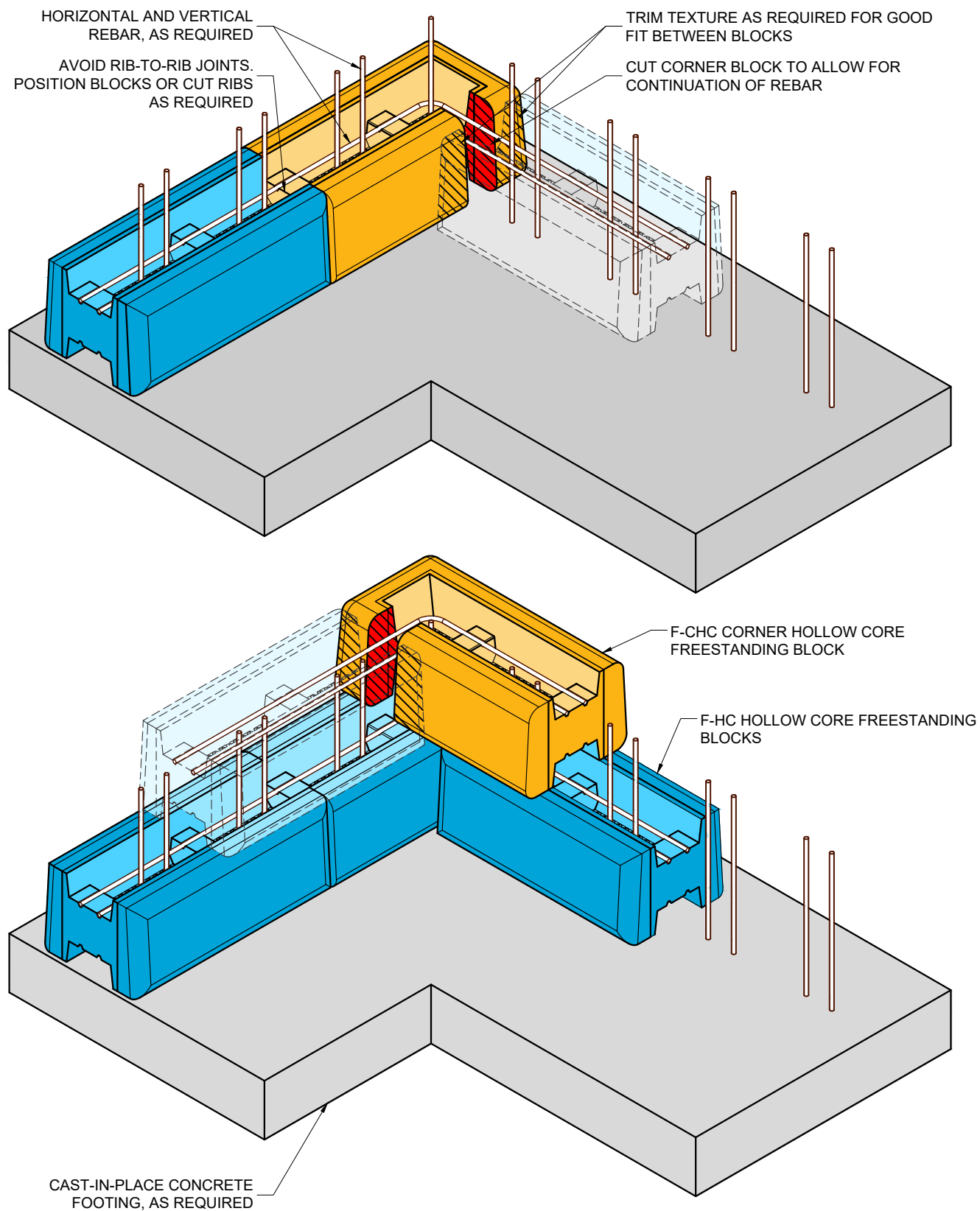
**BEND DETAIL**  
NO. 3 REBAR HOOKS



**END VIEW**  
CAP BLOCK CAST WITH R-ANCHORS (SPECIALTY BLOCK)

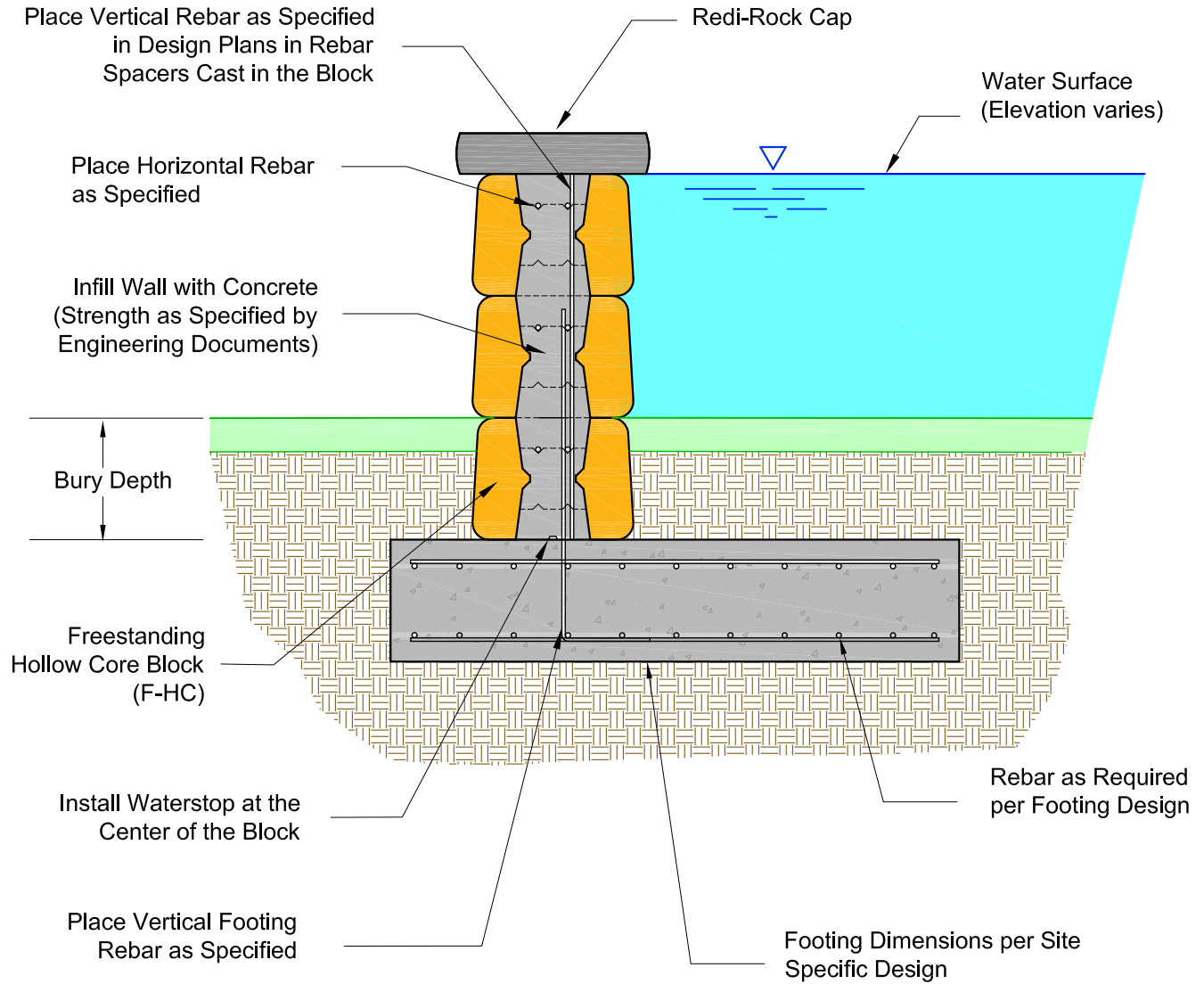


## CORNER DETAILS



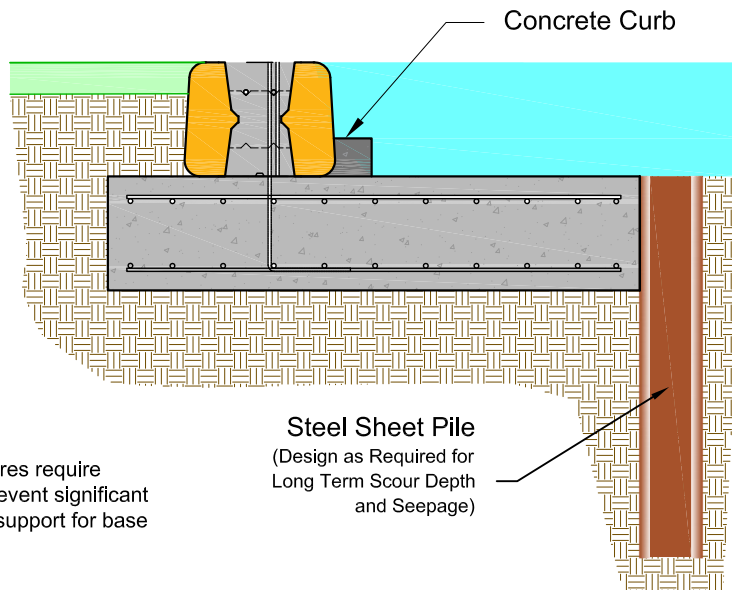
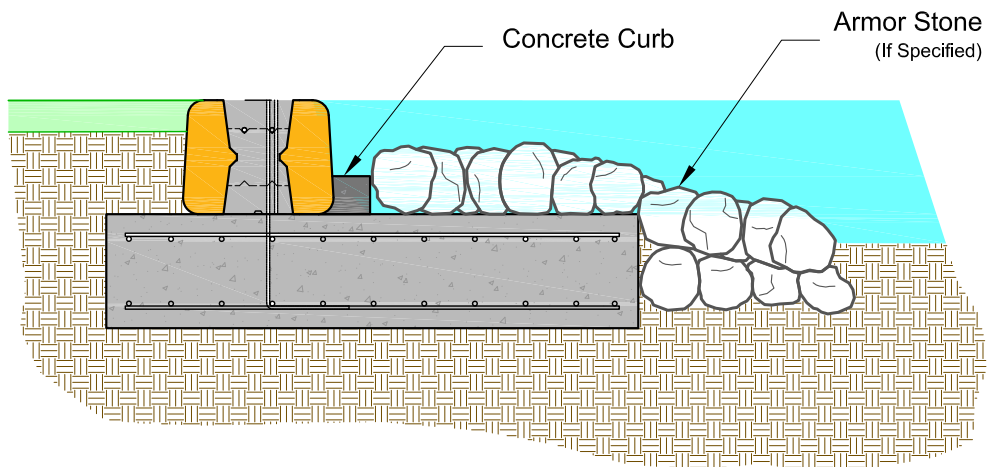
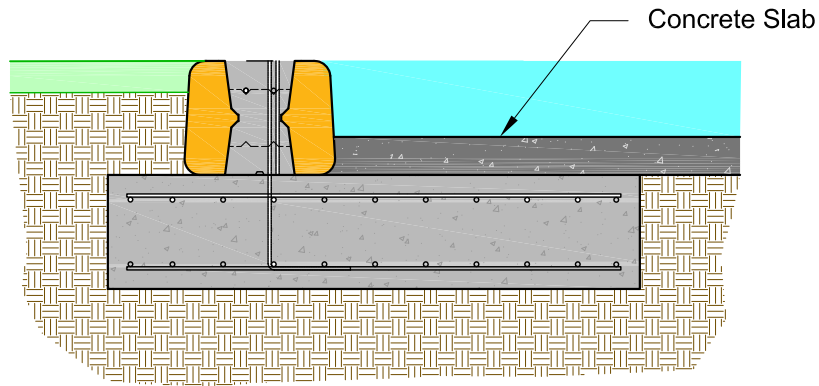


# FLOOD CONTROL WALL SECTION



NOTE: Degree of water tightness depends on many factors. Slight seepage through joints can be expected using standard construction practices. See [www.Redi-Rock.com](http://www.Redi-Rock.com) for more information on flood control walls including detailed notes from full scale demonstration project testing.

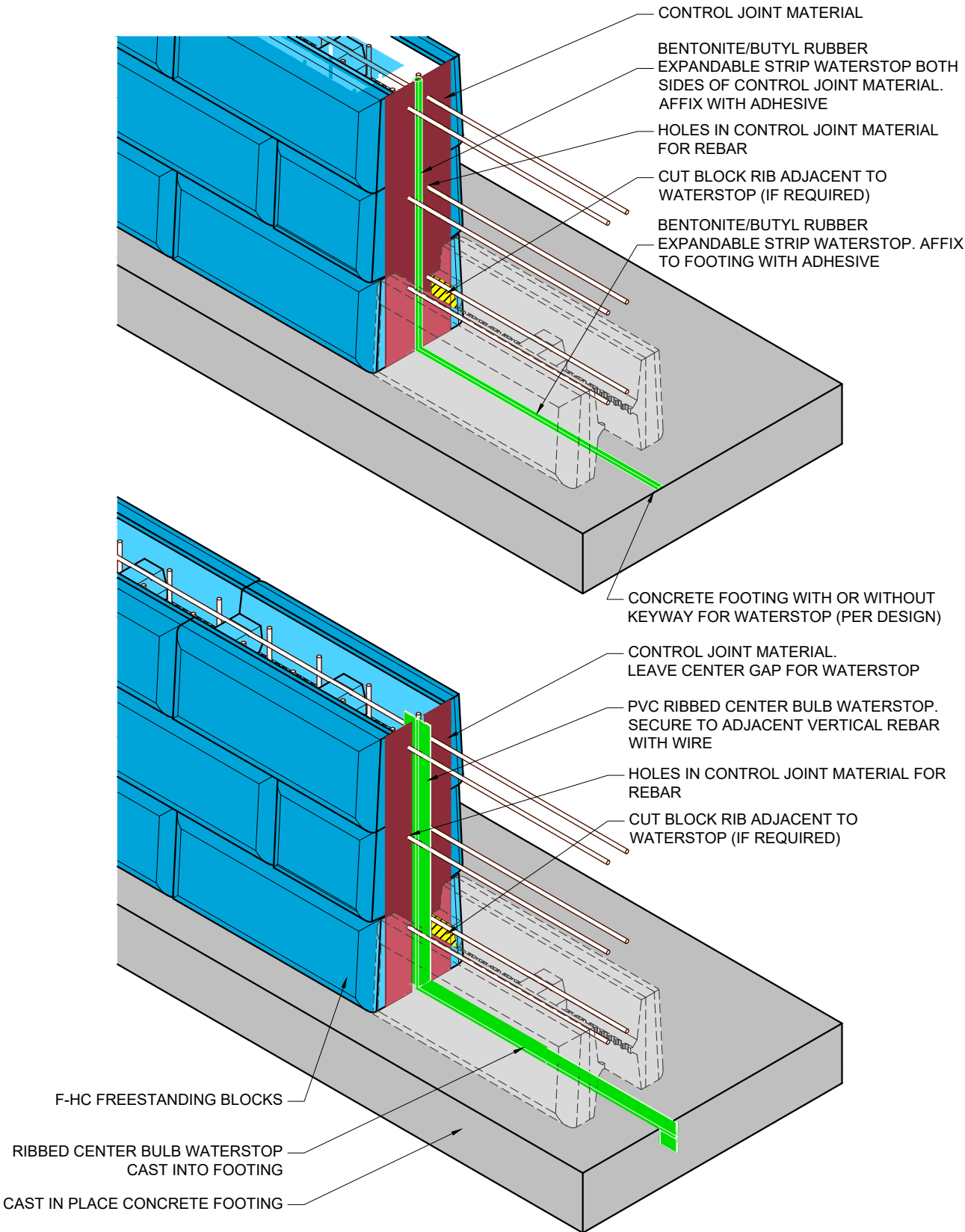
This drawing is for reference only. Determination of the suitability and/or manner of use of any details contained in this document is the sole responsibility of the design engineer of record. Final project designs, including all construction details, shall be prepared by a licensed professional engineer using the actual conditions of the proposed site. Final wall design must address both internal and external drainage and all modes of wall stability.



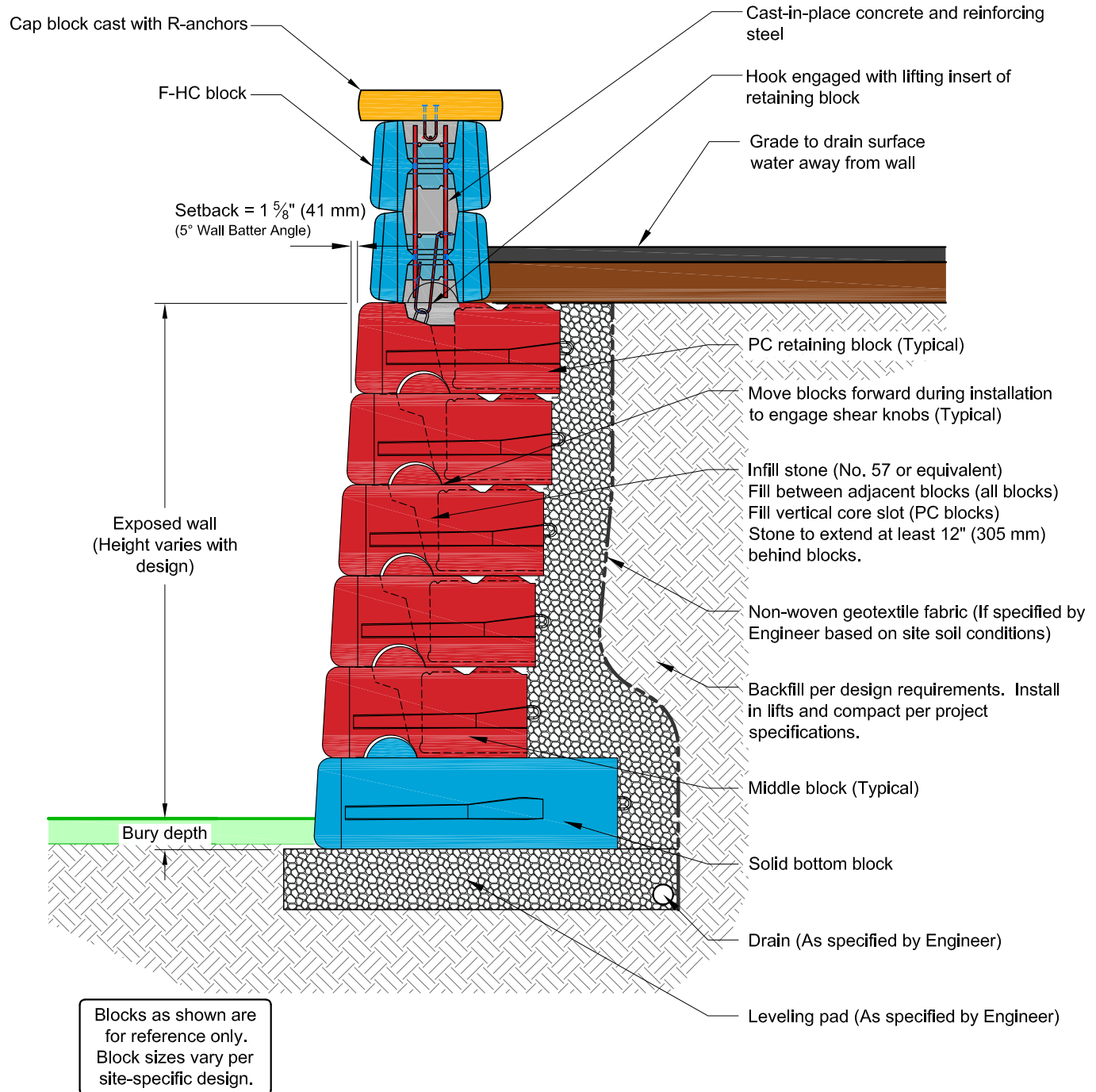
NOTE: Flood control structures require long-term maintenance to prevent significant erosion and loss of soil and support for base of wall

This drawing is for reference only. Determination of the suitability and/or manner of use of any details contained in this document is the sole responsibility of the design engineer of record. Final project designs, including all construction details, shall be prepared by a licensed professional engineer using the actual conditions of the proposed site. Final wall design must address both internal and external drainage and all modes of wall stability.

# WATERSTOP OPTION



## COPING ON GRAVITY WALLS



This drawing is for reference only. Determination of the suitability and/or manner of use of any details contained in this document is the sole responsibility of the design engineer of record. Final project designs, including all construction details, shall be prepared by a licensed professional engineer using the actual conditions of the proposed site.



