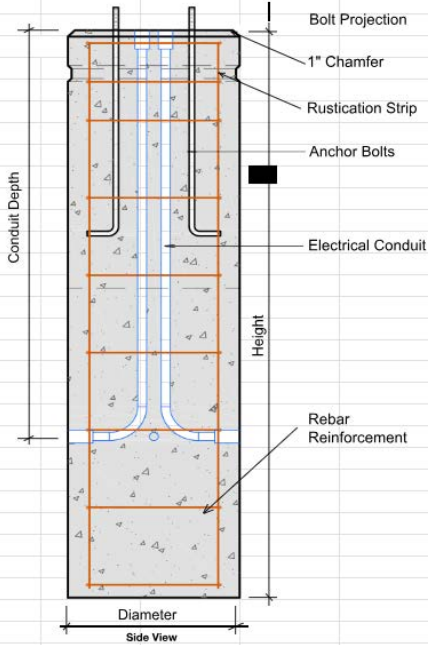


Item	Shape / Face	Height	Diameter	Quantity	Weight	Total
Precast Light Pole Base	Round Rusticated	8'	24"	10	3,600 lbs	36,000 lbs



General Notes	
Concrete: $f_c = 4,500$ psi; $w/c = .40$ ; Air Entrained Per Location Climate Zone	
Reinforcement: ASTM A-615, GR 60.	
Conduit: PVC Per ASTM F-152	
Anchor Bolts: Hot Dip Galvanized	
Drawings not to scale, for reference only.	

Manufacturing Details	
Conduit	(4) 1" Dia PVC
Depth	54" from top of base.
Vert. Rebar	(4) #5 at 92" in Length
Horiz. Rebar	(9) #3 w/ 18" Dia Hoops
Spacing	11.5" OC
Bolt Size	1" x 36" x 4"
Circle	10.5"
Projection	4.125"

