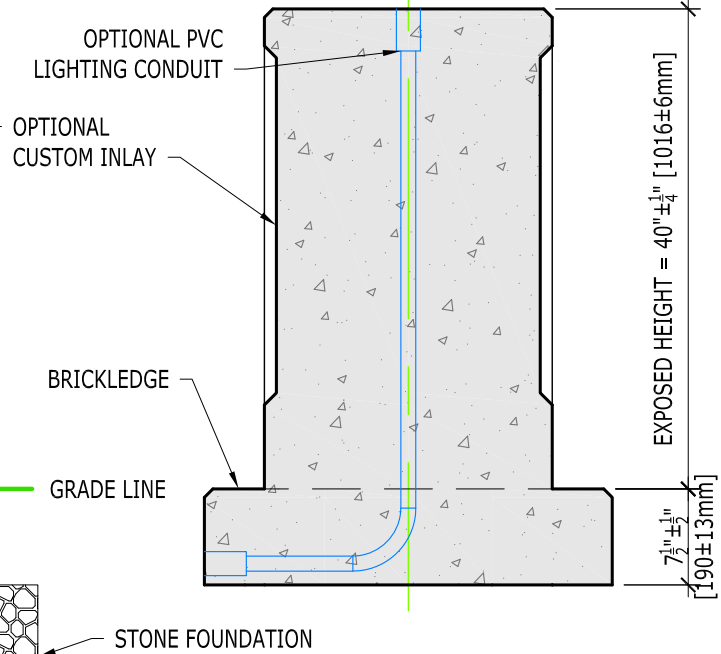
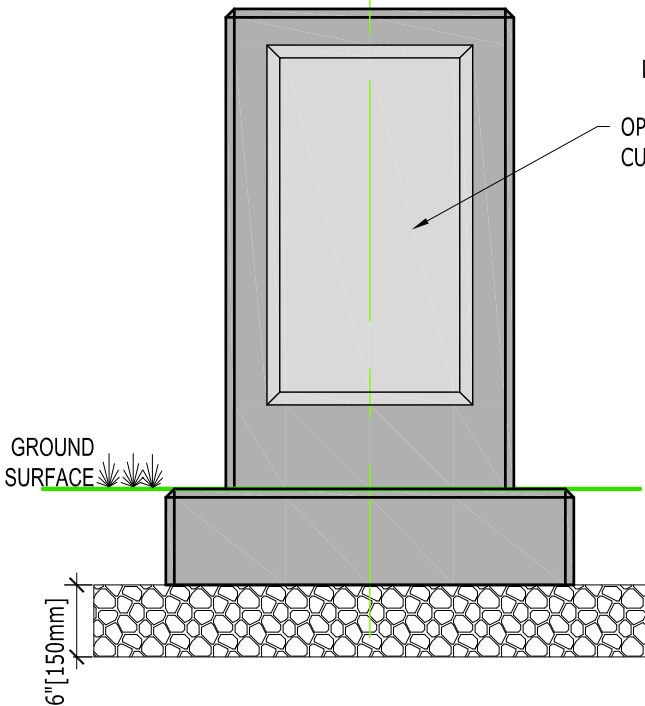
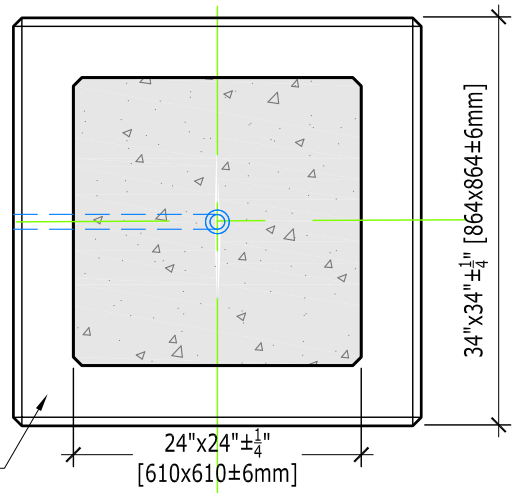


5" ± 1/4" [127 ± 6mm]  
BRICKLEDGE, TYPICAL



**NOTES:**

1. BASE UNIT WEIGHT = 2,700 POUNDS [1,230 kg].
2. BEARING PRESSURE: 340psf [16.1 kPa] WITH BASE UNIT. APPLIED PRESSURE IS LESS THAN ALLOWABLE BEARING PRESSURE FOR MOST SOIL CONDITIONS.
3. VERTICAL SURFACES ABOVE BRICKLEDGE MAY BE CUSTOMIZED TO THE SPECIFICIER'S DESIGN OR CLAD WITH A BRICK OR STONE VENEER.

0" 3" 6" 9" 12"  
SCALE

DRAWN BY:	BWL
SCALE:	3/4" = 1'-0"
DATE:	8SEP2014
SHEET:	1 of 1

TITLE:	<b>SQUARE BRICKLEDGE COLUMN</b>
FILE:	POLE BASE DRAWINGS - 090814.dwg

**pole base**  
www.polebase.com